



### Valentine Puffy Hearts 1 Small (AJD223) SAMPLE

Digitized by Louise Jackson of Aljay Designs

[www.oregonpatchworks.com](http://www.oregonpatchworks.com)

<http://www.oregonpatchworks.com/collections.php?id=AJD>

email: [support@oregonpatchworks.com](mailto:support@oregonpatchworks.com)

[louise@aljaydesigns.com](mailto:louise@aljaydesigns.com)

This sample pack is provided so that you can test the quality of the designs before committing to a purchase and includes 2 designs – a front and back of the Valentine Puffy Heart. Valentine Puffy Hearts 1 Small (AJD223) includes 16 heart designs fit the 100 x 100 mm (4 x 4 inch) hoop size. There are 8 front and 8 back designs intended to be stitched onto felt, to make into puffy hearts to give away on Valentines Day. They could also be used to mark other special occasions such as birthdays, engagements, and weddings, or just simply to cheer a special friend up with some love! Note used pale threads because I was stitching onto red felt. You can alter thread colors to better stand out on the felt color you choose.

Full step by step instructions for making the puffy hearts shown are included when you purchase the set.

#### Aljay\_AJD223\_SampleA (Front design)

Dimensions				Stitches	Colors	Thread Changes
Inches		Millimetres				
3 ½	3 ½	88.9	88.6	7 631	6	5

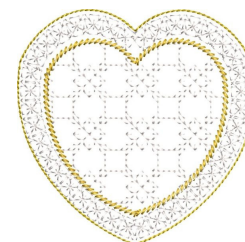
No.		Marathon Thread No.	Color Description	Design Part
1		1272	Light Green	Stems
2		1179	White	Daisies
3		1002	Light Yellow	Daisy centers
4		5001	Pale variegated	Small hearts
5		1187	Beachwood	Inner heart pattern outline
6		1018	Antique dark gold	Outer heart outline



#### Aljay\_AJD223\_SampleB (Back design)

Dimensions				Stitches	Colors	Thread Changes
Inches		Millimetres				
3 ½	3 ½	88.9	88.6	3 843	4	3

No.		Marathon Thread No.	Color Description	Design Part
1		1179	White	Heart pattern fill
2		1187	Beachwood	Filled heart stem stitch outline
3		1181	Ivory	Outer heart pattern outline
4		1018	Antique dark gold	Outer heart outline



See the puffy hearts overleaf, made with this set.

**FRONTS****BACKS**