

Printed 9/18/2018



- 1. Beige
- 2. Black
- 3. Light Brown
- 4. Linen
- 5. Deep Gold

**Eo645-01-4x4.pes**

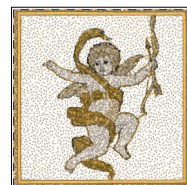
3.84x3.83 inches; 11,766 stitches  
5 thread changes; 5 colors



- 1. Beige
- 2. Black
- 3. Light Brown
- 4. Linen
- 5. Deep Gold

**Eo645-02-4x4.pes**

3.84x3.83 inches; 15,645 stitches  
5 thread changes; 5 colors



- 1. Beige
- 2. Black
- 3. Light Brown
- 4. Linen
- 5. Deep Gold

**Eo645-03-4x4.pes**

3.84x3.83 inches; 13,244 stitches  
5 thread changes; 5 colors



- 1. Beige
- 2. Black
- 3. Light Brown
- 4. Linen
- 5. Deep Gold

**Eo645-04-4x4.pes**

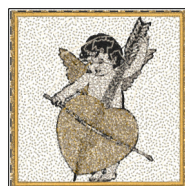
3.84x3.83 inches; 14,550 stitches  
5 thread changes; 5 colors



- 1. Beige
- 2. Black
- 3. Light Brown
- 4. Linen
- 5. Deep Gold

**Eo645-05-4x4.pes**

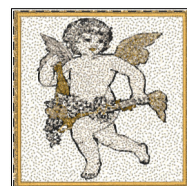
3.84x3.83 inches; 13,860 stitches  
5 thread changes; 5 colors



- 1. Beige
- 2. Black
- 3. Light Brown
- 4. Linen
- 5. Deep Gold

**Eo645-06-4x4.pes**

3.84x3.83 inches; 15,416 stitches  
5 thread changes; 5 colors



- 1. Beige
- 2. Black
- 3. Light Brown
- 4. Linen
- 5. Deep Gold

**Eo645-07-4x4.pes**

3.84x3.83 inches; 13,160 stitches  
5 thread changes; 5 colors



- 1. Beige
- 2. Black
- 3. Light Brown
- 4. Linen
- 5. Deep Gold

**Eo645-08-4x4.pes**

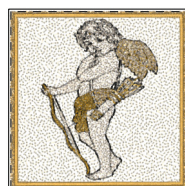
3.84x3.83 inches; 15,772 stitches  
5 thread changes; 5 colors



- 1. Beige
- 2. Black
- 3. Light Brown
- 4. Linen
- 5. Deep Gold

**Eo645-09-4x4.pes**

3.84x3.83 inches; 11,921 stitches  
5 thread changes; 5 colors



- 1. Beige
- 2. Black
- 3. Light Brown
- 4. Linen
- 5. Deep Gold

**Eo645-10-4x4.pes**

3.84x3.83 inches; 12,016 stitches  
5 thread changes; 5 colors



- 1. Beige
- 2. Black
- 3. Light Brown
- 4. Linen
- 5. Deep Gold

**Eo645-11-4x4.pes**

3.84x3.83 inches; 11,282 stitches  
5 thread changes; 5 colors



- 1. Beige
- 2. Black
- 3. Light Brown
- 4. Linen
- 5. Deep Gold

**Eo645-12-4x4.pes**

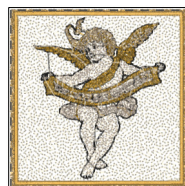
3.84x3.83 inches; 11,053 stitches  
5 thread changes; 5 colors



- 1. Beige
- 2. Black
- 3. Light Brown
- 4. Linen
- 5. Deep Gold

**Eo645-13-4x4.pes**

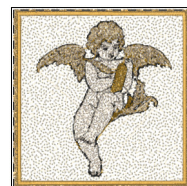
3.84x3.83 inches; 13,966 stitches  
5 thread changes; 5 colors



- 1. Beige
- 2. Black
- 3. Light Brown
- 4. Linen
- 5. Deep Gold

**Eo645-14-4x4.pes**

3.84x3.83 inches; 13,230 stitches  
5 thread changes; 5 colors



- 1. Beige
- 2. Black
- 3. Light Brown
- 4. Linen
- 5. Deep Gold

**Eo645-15-4x4.pes**

3.84x3.83 inches; 12,543 stitches  
5 thread changes; 5 colors



- 1. Beige
- 2. Black
- 3. Light Brown
- 4. Linen
- 5. Deep Gold

**Eo645-16-4x4.pes**

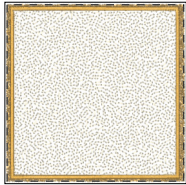
3.84x3.83 inches; 12,680 stitches  
5 thread changes; 5 colors

EO645-Photostitch sewout, 1st colour is the background and should be the lightest, 2nd the darkest, 3rd medium, 4th skin colour, 5th is the border. please remember to snip the long jump stitches between colours. I would love a photo of your project.

D:\00 SEWING AND EMBROIDERY\00 EMERALD ORIGINALS\000 photo stitch sets\EO645-647\_Christmas-Cherubs\EO645-646-647\EO645\_PES

Page 2 of 2

Printed 9/18/2018



- 1. Beige
- 2. Deep Gold

**Frame 4x4.pes**

3.84x3.83 inches; 7,376 stitches  
2 thread changes; 2 colors