

- 1. Black (Mar:1180)
- 2. Placement Line (App:3)
- 3. Cutting Line (App:4)
- 4. Placement Line (App:3)
- 5. Cutting Line (App:4)
- 6. Tackdown (App:5)
- 7. Tropical Shallows (Mar:1104)
- 8. Spearmint (Mar:1105)
- 9. Copper (Mar:1137)
- 10.Sandy Gravel (Mar:1131)
- 11.White (BER:15)
- 12.Black (Mar:1180)
- 13. Sandy Orange (Mar:1188)
- 14.Irish Eyes (Mar:1112)

Ee258a_01.art60

3.89x3.55 inches; 10,203 stitches
14 thread changes; 11 colors



- 1. Black (Mar:1180)
- 2. Placement Line (App:3)
- 3. Cutting Line (App:4)
- 4. Placement Line (App:3)
- 5. Cutting Line (App:4)
- 6. Tackdown (App:5)
- 7. Tropical Shallows (Mar:1104)
- 8. Spearmint (Mar:1105)
- 9. Copper (Mar:1137)
- 10.Sandy Gravel (Mar:1131)
- 11.White (BER:15)
- 12.Black (Mar:1180)
- 13.Summer Citrus (Mar:1007)
- 14.Irish Eyes (Mar:1112)

Ee258a_02.art60

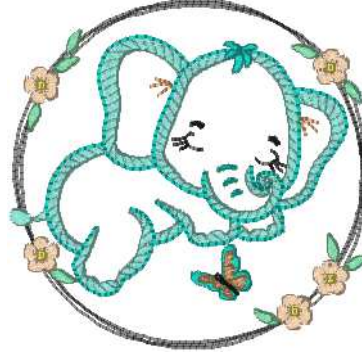
3.89x3.57 inches; 11,326 stitches
14 thread changes; 11 colors



- 1. Black (Mar:1180)
- 2. Placement Line (App:3)
- 3. Cutting Line (App:4)
- 4. Placement Line (App:3)
- 5. Cutting Line (App:4)
- 6. Tackdown (App:5)
- 7. Tropical Shallows (Mar:1104)
- 8. Spearmint (Mar:1105)
- 9. Copper (Mar:1137)
- 10.Sandy Gravel (Mar:1131)
- 11.White (BER:15)
- 12.Black (Mar:1180)
- 13.Summer Citrus (Mar:1007)
- 14.Irish Eyes (Mar:1112)

Ee258a_03.art60

3.88x3.68 inches; 8,920 stitches
14 thread changes; 11 colors



- 1. Black (Mar:1180)
- 2. Placement Line (App:3)
- 3. Cutting Line (App:4)
- 4. Placement Line (App:3)
- 5. Cutting Line (App:4)
- 6. Tackdown (App:5)
- 7. Tropical Shallows (Mar:1104)
- 8. Spearmint (Mar:1105)
- 9. Copper (Mar:1137)
- 10.Sandy Gravel (Mar:1131)
- 11.Black (Mar:1180)
- 12.Summer Citrus (Mar:1007)
- 13.Irish Eyes (Mar:1112)

Ee258a_04.art60

3.88x3.77 inches; 9,248 stitches
13 thread changes; 10 colors



- 1. Black (Mar:1180)
- 2. Placement Line (App:3)
- 3. Cutting Line (App:4)
- 4. Placement Line (App:3)
- 5. Cutting Line (App:4)
- 6. Tackdown (App:5)
- 7. Tropical Shallows (Mar:1104)
- 8. Spearmint (Mar:1105)
- 9. Copper (Mar:1137)
- 10.Sandy Gravel (Mar:1131)
- 11.White (BER:15)
- 12.Black (Mar:1180)
- 13.Summer Citrus (Mar:1007)
- 14.Irish Eyes (Mar:1112)

Ee258a_05.art60

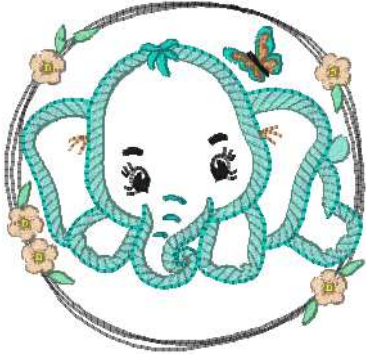
3.88x3.72 inches; 10,323 stitches
14 thread changes; 11 colors



- 1. Black (Mar:1180)
- 2. Placement Line (App:3)
- 3. Cutting Line (App:4)
- 4. Placement Line (App:3)
- 5. Cutting Line (App:4)
- 6. Tackdown (App:5)
- 7. Tropical Shallows (Mar:1104)
- 8. Spearmint (Mar:1105)
- 9. Copper (Mar:1137)
- 10.Sandy Gravel (Mar:1131)
- 11.White (BER:15)
- 12.Black (Mar:1180)
- 13.Summer Citrus (Mar:1007)
- 14.Irish Eyes (Mar:1112)

Ee258a_06.art60

3.89x3.57 inches; 8,399 stitches
14 thread changes; 11 colors



- 1. Black (Mar:1180)
- 2. Placement Line (App:3)
- 3. Cutting Line (App:4)
- 4. Placement Line (App:3)
- 5. Cutting Line (App:4)
- 6. Tackdown (App:5)
- 7. Tropical Shallows (Mar:1104)
- 8. Spearmint (Mar:1105)
- 9. Copper (Mar:1137)
- 10. Sandy Gravel (Mar:1131)
- 11. White (BER:15)
- 12. Black (Mar:1180)
- 13. Summer Citrus (Mar:1007)
- 14. Irish Eyes (Mar:1112)

Ee258a_07.art60
 3.88x3.76 inches; 9,964 stitches
 14 thread changes; 11 colors



- 1. Black (Mar:1180)
- 2. Placement Line (App:3)
- 3. Cutting Line (App:4)
- 4. Placement Line (App:3)
- 5. Cutting Line (App:4)
- 6. Tackdown (App:5)
- 7. Tropical Shallows (Mar:1104)
- 8. Spearmint (Mar:1105)
- 9. Copper (Mar:1137)
- 10. Sandy Gravel (Mar:1131)
- 11. White (BER:15)
- 12. Black (Mar:1180)
- 13. Summer Citrus (Mar:1007)
- 14. Irish Eyes (Mar:1112)

Ee258a_08.art60
 3.88x3.72 inches; 9,299 stitches
 14 thread changes; 11 colors



- 1. Black (Mar:1180)
- 2. Placement Line (App:3)
- 3. Cutting Line (App:4)
- 4. Placement Line (App:3)
- 5. Cutting Line (App:4)
- 6. Tackdown (App:5)
- 7. Tropical Shallows (Mar:1104)
- 8. Spearmint (Mar:1105)
- 9. Copper (Mar:1137)
- 10. Sandy Gravel (Mar:1131)
- 11. White (BER:15)
- 12. Black (Mar:1180)
- 13. Summer Citrus (Mar:1007)
- 14. Irish Eyes (Mar:1112)

Ee258a_09.art60
 3.88x3.64 inches; 8,894 stitches
 14 thread changes; 11 colors



- 1. Black (Mar:1180)
- 2. Placement Line (App:3)
- 3. Cutting Line (App:4)
- 4. Placement Line (App:3)
- 5. Cutting Line (App:4)
- 6. Tackdown (App:5)
- 7. Tropical Shallows (Mar:1104)
- 8. Spearmint (Mar:1105)
- 9. Copper (Mar:1137)
- 10. Sandy Gravel (Mar:1131)
- 11. White (Mar:1179)
- 12. Black (Mar:1180)
- 13. Summer Citrus (Mar:1007)
- 14. Irish Eyes (Mar:1112)

Ee258a_10.art60
 3.89x3.63 inches; 10,944 stitches
 14 thread changes; 11 colors



- 1. Black (Mar:1180)
- 2. Placement Line (App:3)
- 3. Cutting Line (App:4)
- 4. Placement Line (App:3)
- 5. Cutting Line (App:4)
- 6. Tackdown (App:5)
- 7. Tropical Shallows (Mar:1104)
- 8. Spearmint (Mar:1105)
- 9. Copper (Mar:1137)
- 10. Sandy Gravel (Mar:1131)
- 11. White (BER:15)
- 12. Black (Mar:1180)
- 13. Sandy Orange (Mar:1188)
- 14. Irish Eyes (Mar:1112)

Ee258b_01.art60
 4.68x4.27 inches; 12,215 stitches
 14 thread changes; 11 colors



- 1. Black (Mar:1180)
- 2. Placement Line (App:3)
- 3. Cutting Line (App:4)
- 4. Placement Line (App:3)
- 5. Cutting Line (App:4)
- 6. Tackdown (App:5)
- 7. Tropical Shallows (Mar:1104)
- 8. Spearmint (Mar:1105)
- 9. Copper (Mar:1137)
- 10. Sandy Gravel (Mar:1131)
- 11. White (BER:15)
- 12. Black (Mar:1180)
- 13. Summer Citrus (Mar:1007)
- 14. Irish Eyes (Mar:1112)

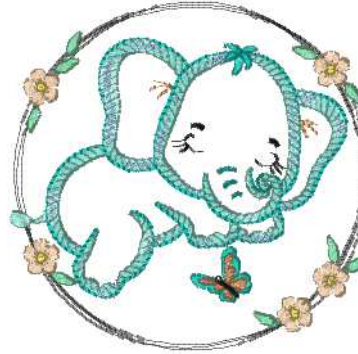
Ee258b_02.art60
 4.68x4.30 inches; 13,496 stitches
 14 thread changes; 11 colors



- 1. Black (Mar:1180)
- 2. Placement Line (App:3)
- 3. Cutting Line (App:4)
- 4. Placement Line (App:3)
- 5. Cutting Line (App:4)
- 6. Tackdown (App:5)
- 7. Tropical Shallows (Mar:1104)
- 8. Spearmint (Mar:1105)
- 9. Copper (Mar:1137)
- 10. Sandy Gravel (Mar:1131)
- 11. White (BER:15)
- 12. Black (Mar:1180)
- 13. Summer Citrus (Mar:1007)
- 14. Irish Eyes (Mar:1112)

Ee258b_03.art60

4.67x4.43 inches; 10,670 stitches
14 thread changes; 11 colors



- 1. Black (Mar:1180)
- 2. Placement Line (App:3)
- 3. Cutting Line (App:4)
- 4. Placement Line (App:3)
- 5. Cutting Line (App:4)
- 6. Tackdown (App:5)
- 7. Tropical Shallows (Mar:1104)
- 8. Spearmint (Mar:1105)
- 9. Copper (Mar:1137)
- 10. Sandy Gravel (Mar:1131)
- 11. Black (Mar:1180)
- 12. Summer Citrus (Mar:1007)
- 13. Irish Eyes (Mar:1112)

Ee258b_04.art60

4.67x4.54 inches; 10,958 stitches
13 thread changes; 10 colors



- 1. Black (Mar:1180)
- 2. Placement Line (App:3)
- 3. Cutting Line (App:4)
- 4. Placement Line (App:3)
- 5. Cutting Line (App:4)
- 6. Tackdown (App:5)
- 7. Tropical Shallows (Mar:1104)
- 8. Spearmint (Mar:1105)
- 9. Copper (Mar:1137)
- 10. Sandy Gravel (Mar:1131)
- 11. White (BER:15)
- 12. Black (Mar:1180)
- 13. Summer Citrus (Mar:1007)
- 14. Irish Eyes (Mar:1112)

Ee258b_05.art60

4.67x4.47 inches; 12,375 stitches
14 thread changes; 11 colors



- 1. Black (Mar:1180)
- 2. Placement Line (App:3)
- 3. Cutting Line (App:4)
- 4. Placement Line (App:3)
- 5. Cutting Line (App:4)
- 6. Tackdown (App:5)
- 7. Tropical Shallows (Mar:1104)
- 8. Spearmint (Mar:1105)
- 9. Copper (Mar:1137)
- 10. Sandy Gravel (Mar:1131)
- 11. White (BER:15)
- 12. Black (Mar:1180)
- 13. Summer Citrus (Mar:1007)
- 14. Irish Eyes (Mar:1112)

Ee258b_06.art60

4.68x4.30 inches; 9,952 stitches
14 thread changes; 11 colors



- 1. Black (Mar:1180)
- 2. Placement Line (App:3)
- 3. Cutting Line (App:4)
- 4. Placement Line (App:3)
- 5. Cutting Line (App:4)
- 6. Tackdown (App:5)
- 7. Tropical Shallows (Mar:1104)
- 8. Spearmint (Mar:1105)
- 9. Copper (Mar:1137)
- 10. Sandy Gravel (Mar:1131)
- 11. White (BER:15)
- 12. Black (Mar:1180)
- 13. Summer Citrus (Mar:1007)
- 14. Irish Eyes (Mar:1112)

Ee258b_07.art60

4.67x4.52 inches; 12,063 stitches
14 thread changes; 11 colors



- 1. Black (Mar:1180)
- 2. Placement Line (App:3)
- 3. Cutting Line (App:4)
- 4. Placement Line (App:3)
- 5. Cutting Line (App:4)
- 6. Tackdown (App:5)
- 7. Tropical Shallows (Mar:1104)
- 8. Spearmint (Mar:1105)
- 9. Copper (Mar:1137)
- 10. Sandy Gravel (Mar:1131)
- 11. White (BER:15)
- 12. Black (Mar:1180)
- 13. Summer Citrus (Mar:1007)
- 14. Irish Eyes (Mar:1112)

Ee258b_08.art60

4.67x4.47 inches; 11,214 stitches
14 thread changes; 11 colors



- 1. Black (Mar:1180)
- 2. Placement Line (App:3)
- 3. Cutting Line (App:4)
- 4. Placement Line (App:3)
- 5. Cutting Line (App:4)
- 6. Tackdown (App:5)
- 7. Tropical Shallows (Mar:1104)
- 8. Spearmint (Mar:1105)
- 9. Copper (Mar:1137)
- 10. Sandy Gravel (Mar:1131)
- 11. White (BER:15)
- 12. Black (Mar:1180)
- 13. Summer Citrus (Mar:1007)
- 14. Irish Eyes (Mar:1112)

Ee258b_09.art60

4.67x4.38 inches; 10,661 stitches
14 thread changes; 11 colors



- 1. Black (Mar:1180)
- 2. Placement Line (App:3)
- 3. Cutting Line (App:4)
- 4. Placement Line (App:3)
- 5. Cutting Line (App:4)
- 6. Tackdown (App:5)
- 7. Tropical Shallows (Mar:1104)
- 8. Spearmint (Mar:1105)
- 9. Copper (Mar:1137)
- 10. Sandy Gravel (Mar:1131)
- 11. White (Mar:1179)
- 12. Black (Mar:1180)
- 13. Summer Citrus (Mar:1007)
- 14. Irish Eyes (Mar:1112)

Ee258b_10.art60

4.68x4.37 inches; 13,134 stitches
14 thread changes; 11 colors