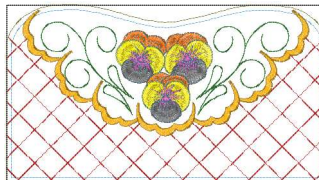


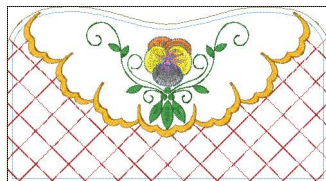
- 1. Black
- 2. Electric Blue
- 3. Dark Olive
- 4. Red

Ewc235_base.pes
248.60x120.30 mm; 3,853 stitches
4 thread changes; 4 colors



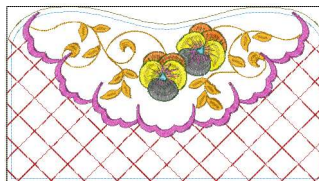
- 1. Black
- 2. Electric Blue
- 3. Dark Olive
- 4. Red
- 5. Vermilion
- 6. Yellow
- 7. Dark Gray
- 8. Magenta
- 9. Sky Blue
- 10. Emerald Green
- 11. Tangerine

Ewc235_pansy1.pes
247.90x136.60 mm; 16,606 stitches
11 thread changes; 11 colors



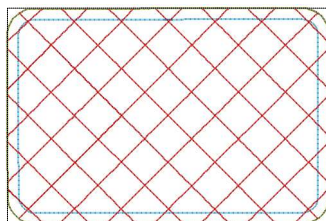
- 1. Black
- 2. Electric Blue
- 3. Dark Olive
- 4. Red
- 5. Vermilion
- 6. Yellow
- 7. Dark Gray
- 8. Magenta
- 9. Sky Blue
- 10. Emerald Green
- 11. Tangerine

Ewc235_pansy2.pes
247.90x136.60 mm; 11,501 stitches
11 thread changes; 11 colors



- 1. Black
- 2. Electric Blue
- 3. Dark Olive
- 4. Red
- 5. Vermilion
- 6. Yellow
- 7. Dark Gray
- 8. Magenta
- 9. Sky Blue
- 10. Emerald Green
- 11. Tangerine
- 12. Magenta

Ewc235_pansy3.pes
247.90x136.60 mm; 16,188 stitches
12 thread changes; 11 colors



- 1. Black
- 2. Electric Blue
- 3. Dark Olive
- 4. Red

Ewc235_shortside.pes
174.80x117.40 mm; 2,688 stitches
4 thread changes; 4 colors