

COLOR CHART

Unicornmask_01_fabric_4x4

95.60x99.90 mm; 7,570 stitches

Unicornmask_01_glitter_4x4

95.50x99.90 mm; 7,691 stitches



1. Appliqué Position face
2. Appliqué Material white fabric
3. Appliqué Position horn
4. Appliqué Material silver fabric / glitter
5. Appliqué Position leaves
6. Appliqué Material green fabric / glitter
7. Appliqué Position flower
8. Appliqué Material purple fabric / glitter
9. Flesh Pink 1022
10. Pewter 1455

Add lining to back

11. Appliqué Position stitch lining
- Cut away excess lining

12. White 1179
13. Dark Gray 1320
14. Silver 1165
15. Fresh Green 1119
16. Leaf Green 1125
17. Lilac 1195
18. Violet 1261
19. Cream Yellow 1006

Unicornmask_01_fabric_6x10

159.90x167.40 mm; 13,589 stitches

Unicornmask_01_glitter_6x10

159.90x167.40 mm; 13,740 stitches



1. Appliqué Position face
2. Appliqué Material white fabric
3. Appliqué Position horn
4. Appliqué Material silver fabric / glitter
5. Appliqué Position leaves
6. Appliqué Material green fabric / glitter
7. Appliqué Position flower
8. Appliqué Material purple fabric / glitter
9. Flesh Pink 1022
10. Pewter 1455

Add lining to back

11. Appliqué Position stitch lining
- Cut away excess lining

12. White 1179
13. Silver 1165
14. Fresh Green 1119
15. Leaf Green 1125
16. Lilac 1195
17. Violet 1261
18. Cream Yellow 1006
19. Dark Gray 1320

Unicornmask_02_fabric_4x4

95.60x99.90 mm; 9,704 stitches

Unicornmask_02_glitter_4x4

95.50x99.90 mm; 9,747 stitches



1. Appliqué Position face
2. Appliqué Material white fabric
3. Appliqué Position horn
4. Appliqué Material silver fabric / glitter
5. Flesh Pink 1022
6. Cream Yellow 1006
7. Pewter 1455

Add lining to back

8. Appliqué Position stitch lining
- Cut away excess lining

9. White 1179
10. Dark Gray 1320
11. Leaf Green 1125
12. Sky Blue 1094
13. Pink 1023
14. Yellow 1007
15. Silver 1165
16. Violet 1261

Unicornmask_02_fabric_6x10

159.90x167.40 mm; 17,041 stitches

Unicornmask_02_glitter_6x10

159.90x167.40 mm; 17,112 stitches



1. Appliqué Position face
2. Appliqué Material white fabric
3. Appliqué Position horn
4. Appliqué Material silver fabric / glitter
5. Flesh Pink 1022
6. Cream Yellow 1006
7. Pewter 1455
- Add lining to back
8. Appliqué Position stitch lining
- Cut away excess lining
9. White 1179
10. Leaf Green 1125
11. Sky Blue 1094
12. Pink 1023
13. Yellow 1007
14. Silver 1165
15. Violet 1261
16. Dark Gray 1320

Unicornmask_03_fabric_4x4

95.60x99.90 mm; 7,218 stitches

Unicornmask_03_glitter_4x4

95.50x99.80 mm; 7,338 stitches



1. Appliqué Position face
2. Appliqué Material white fabric
3. Appliqué Position horn
4. Appliqué Material pink fabric / glitter
5. Appliqué Position stars
6. Appliqué Material yellow fabric / glitter

7. Flesh Pink 1022
8. Deep Rose 1028

Add lining to back

9. Appliqué Position stitch lining
- Cut away excess lining
10. White 1179
11. Dark Gray 1320
12. Pink 1023
13. Cream Yellow 1006
14. Sky Blue 1094

Unicornmask_03_fabric_6x10

159.90x167.70 mm; 13,302 stitches

Unicornmask_03_glitter_6x10

159.80x167.70 mm; 13,446 stitches



1. Appliqué Position face
2. Appliqué Material white fabric
3. Appliqué Position horn
4. Appliqué Material pink fabric / glitter
5. Appliqué Position stars
6. Appliqué Material yellow fabric / glitter

7. Flesh Pink 1022
8. Deep Rose 1028

Add lining to back

9. Appliqué Position stitch lining
- Cut away excess lining
10. White 1179
11. Pink 1023
12. Cream Yellow 1006
13. Sky Blue 1094
14. Dark Gray 1320

Unicornmask_04_fabric_4x4

95.60x99.90 mm; 9,453 stitches

Unicornmask_04_glitter_4x4

95.50x99.90 mm; 9,521 stitches



1. Appliqué Position face
2. Appliqué Material white fabric
3. Appliqué Position horn
4. Appliqué Material pink fabric / glitter
5. Appliqué Position flowers
6. Appliqué Material blue fabric / glitter
7. Flesh Pink 1022
8. Deep Rose 1028
- Add lining to back
9. Appliqué Position stitch lining
- Cut away excess lining
10. White 1179
11. Dark Gray 1320
12. Fresh Green 1119
13. Leaf Green 1125
14. Light Blue 1094
15. Pink 1023
16. Electric Blue 1105
17. Light Blue 1094
18. Cream Yellow 1006

Unicornmask_04_fabric_6x10

159.90x167.50 mm; 17,183 stitches

Unicornmask_04_glitter_6x10

159.90x167.50 mm; 17,301 stitches



1. Appliqué Position face
2. Appliqué Material white fabric
3. Appliqué Position horn
4. Appliqué Material pink fabric / glitter
5. Appliqué Position flowers
6. Appliqué Material blue fabric / glitter

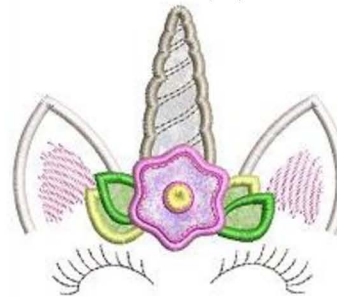
7. Flesh Pink 1022
8. Deep Rose 1028

 Add lining to back

9. Appliqué Position stitch lining
- Cut away excess lining
10. White 1179
11. Fresh Green 1119
12. Leaf Green 1125
13. Sky Blue 1094
14. Pink 1023
15. Electric Blue 1105
16. Sky Blue 1094
17. Cream Yellow 1006
18. Dark Gray 1320

Unicornmask_element01

95.50x82.10 mm; 5,092 stitches



1. Appliqué Position horn
2. Appliqué Material silver fabric / glitter
3. Appliqué Position leaves
4. Appliqué Material green fabric / glitter
5. Appliqué Position flower
6. Appliqué Material purple fabric / glitter
7. Flesh Pink 1022
8. Pewter 1455
9. White 1179
10. Dark Gray 1320
11. Silver 1165
12. Fresh Green 1119
13. Leaf Green 1125
14. Lilac 1195
15. Violet 1261
16. Cream Yellow 1006

Unicornmask_element02

54.20x30.50 mm; 2,532 stitches



1. Appliqué Position leaves
2. Appliqué Material green fabric / glitter
3. Appliqué Position flower
4. Appliqué Material purple fabric / glitter
5. Fresh Green 1119
6. Leaf Green 1125
7. Lilac 1195
8. Violet 1261
9. Cream Yellow 1006

Unicornmask_element03

95.50x82.10 mm; 7,267 stitches



- | | |
|----------------------|-------------------------|
| 1. Appliqué Position | horn |
| 2. Appliqué Material | silver fabric / glitter |
| 3. Flesh Pink | 1022 |
| 4. Cream Yellow | 1006 |
| 5. Pewter | 1455 |
| 6. White | 1179 |
| 7. Dark Gray | 1320 |
| 8. Leaf Green | 1125 |
| 9. Sky Blue | 1094 |
| 10. Pink | 1023 |
| 11. Yellow | 1007 |
| 12. Silver | 1165 |
| 13. Violet | 1261 |

Unicornmask_element04

95.50x82.10 mm; 4,747 stitches



- | | |
|----------------------|-------------------------|
| 1. Appliqué Position | horn |
| 2. Appliqué Material | pink fabric / glitter |
| 3. Appliqué Position | stars |
| 4. Appliqué Material | yellow fabric / glitter |
| 5. Flesh Pink | 1022 |
| 6. Deep Rose | 1028 |
| 7. White | 1179 |
| 8. Dark Gray | 1320 |
| 9. Pink | 1023 |
| 10. Cream Yellow | 1006 |
| 11. Sky Blue | 1094 |

Unicornmask_element05

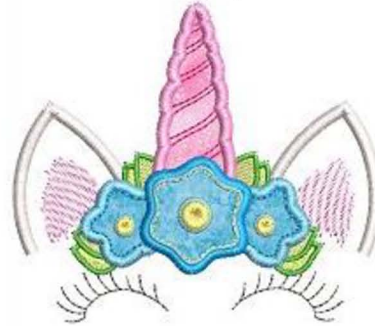
61.90x37.80 mm; 2,037 stitches



- | | |
|----------------------|-------------------------|
| 1. Appliqué Position | star |
| 2. Appliqué Material | yellow fabric / glitter |
| 3. Cream Yellow | 1006 |
| 4. Sky Blue | 1094 |

Unicornmask_element06

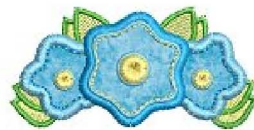
95.50x82.10 mm; 6,951 stitches



- | | |
|----------------------|-----------------------|
| 1. Appliqué Position | horn |
| 2. Appliqué Material | pink fabric / glitter |
| 3. Appliqué Position | flowers |
| 4. Appliqué Material | blue fabric / glitter |
| 5. Flesh Pink | 1022 |
| 6. Deep Rose | 1028 |
| 7. White | 1179 |
| 8. Dark Gray | 1320 |
| 9. Fresh Green | 1119 |
| 10. Leaf Green | 1125 |
| 11. Sky Blue | 1094 |
| 12. Pink | 1023 |
| 13. Electric Blue | 1105 |
| 14. Sky Blue | 1094 |
| 15. Cream Yellow | 1006 |

Unicornmask_element07

66.00x32.20 mm; 4,311 stitches



- | | |
|----------------------|-----------------------|
| 1. Appliqué Position | flowers |
| 2. Appliqué Material | blue fabric / glitter |
| 3. Fresh Green | 1119 |
| 4. Leaf Green | 1125 |
| 5. Sky Blue | 1094 |
| 6. Electric Blue | 1105 |
| 7. Sky Blue | 1094 |
| 8. Cream Yellow | 1006 |