

JHB463 design detail

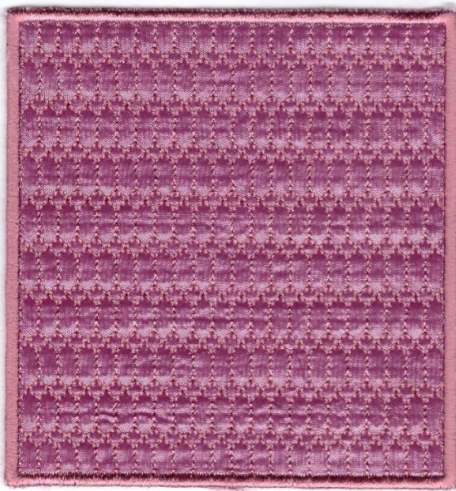
This set consists of two gift boxes, one with Christmas ball ornaments and one with Christmas bell ornaments. The ornaments, although 3D are done in the same hooping as the panel to which it is attached. The box consists of a base panel, and four side panels. You can make each side panel with the ornament panel, or you can use the base panel as side panels as well, so you can alternate between the ornament panel and the base panel for the sides, totally up to you. I also show you an optional method on how to stiffen your panels to have a firmer gift box. A fabric cuff with a draw string closes your box so taller gifts will fit nicely. The box size is approximately 4,5 inches (11,5 cm) square. You can of course add additional rows of panels to make a longer or wider box, no problem.



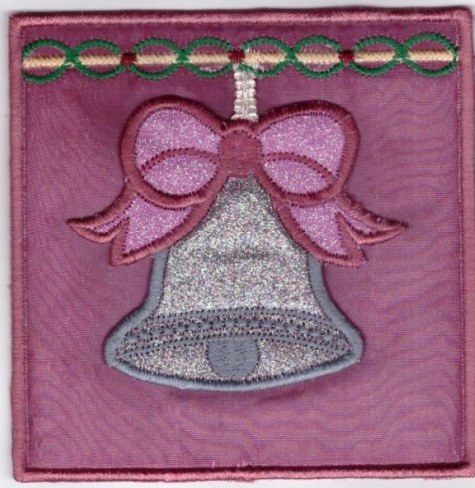
Height:	115,4 mm
Width:	115,4 mm
Stitches:	6 720



Height: 115,4 mm
Width: 115,4 mm
Stitches: 15 302



Height: 115,4 mm
Width: 115,4 mm
Stitches: 10 546



Height: 115,4 mm
Width: 115,4 mm
Stitches: 11 613