



## Design Worksheet

BERNINA Embroidery Software DesignerPlus

Design: BBISBigFlowerBlock6x6

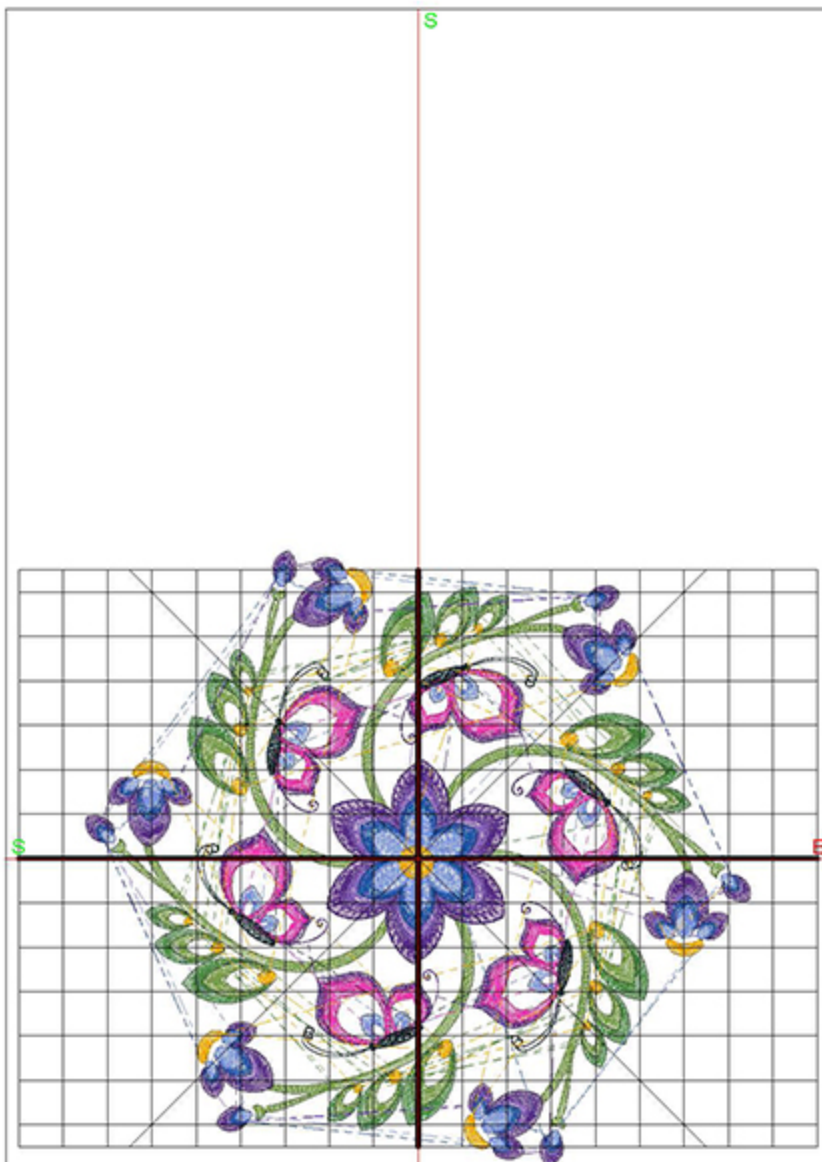
Stitches: 23523

Colors: 9

Height: 138.8 mm

Width: 149.9 mm

Zoom: 0.65



Total bobbin: 37.66m

Color Film:

#	Chart	Code	Name	Thread
1.	■ Madeira Polyneon	1770	Light Emerald Green	11.36m
2.	■ Madeira Polyneon	1648	Celery	20.97m
3.	■ Madeira Polyneon	1830	China Blue	3.08m
4.	■ Madeira Polyneon	1922	Regal Purple	26.31m
5.	■ Madeira Polyneon	1709	Shocking Pink	10.44m
6.	■ Madeira Polyneon	1507	Pea Coat Lining	4.45m
7.	■ Madeira Polyneon	1832	Majestic Purple	11.97m
8.	■ Madeira Polyneon	1829	Blue Bird	9.05m
9.	■ Madeira Polyneon	1830	China Blue	8.12m
10.	■ Madeira Polyneon	1951	Pumpkin Chiffon	4.86m

Machine runtime: 1:04:55



Design Worksheet

Zoom: 0.86

BERNINA Embroidery  
Software DesignerPlus



Name: BBISBlockFlower6x6.ART

Height: 144.1 mm  
 Width: 150.0 mm  
 Stitches: 27131  
 Colors: 8  
 Color changes: 8  
 Trims: 209  
 Machine format: Bernina  
 Hoop: Medium (180 x 130)  
 Total bobbin: 34.99m

Color Sequence:

#	Color	Code	Name	Chart
1.	6	1648	Celery	Madeira Polyneon
2.	4	1830	China Blue	Madeira Polyneon
3.	2	1922	Regal Purple	Madeira Polyneon
4.	1	1709	Shocking Pink	Madeira Polyneon
5.	9	1507	Pea Coat Lining	Madeira Polyneon
6.	3	1832	Majestic Purple	Madeira Polyneon
7.	5	1829	Blue Bird	Madeira Polyneon
8.	4	1830	China Blue	Madeira Polyneon
9.	8	1951	Pumpkin Chiffon	Madeira Polyneon

Machine runtime:

Module	Runtime (hr:min:sec)
Default	1:51:18



Design Worksheet

Zoom: 0.81

BERNINA Embroidery  
Software DesignerPlus



Name: BBISButterflyBlock6x6.ART

Height: 133.0 mm  
 Width: 150.0 mm  
 Stitches: 20894  
 Colors: 9  
 Color changes: 11  
 Trims: 145  
 Machine format: Bernina  
 Hoop: Medium (180 x 130)  
 Total bobbin: 31.55m

Color Sequence:

#	Color	Code	Name	Chart
1.	7	1648	Celery	Madeira Polyneon
2.	4	1830	China Blue	Madeira Polyneon
3.	2	1922	Regal Purple	Madeira Polyneon
4.	1	1709	Shocking Pink	Madeira Polyneon
5.	10	1507	Pea Coat Lining	Madeira Polyneon
6.	2	1922	Regal Purple	Madeira Polyneon
7.	3	1832	Majestic Purple	Madeira Polyneon
8.	5	1829	Blue Bird	Madeira Polyneon
9.	4	1830	China Blue	Madeira Polyneon
10.	8	1770	Light Emerald Green	Madeira Polyneon
11.	7	1648	Celery	Madeira Polyneon
12.	9	1951	Pumpkin Chiffon	Madeira Polyneon

Machine runtime:

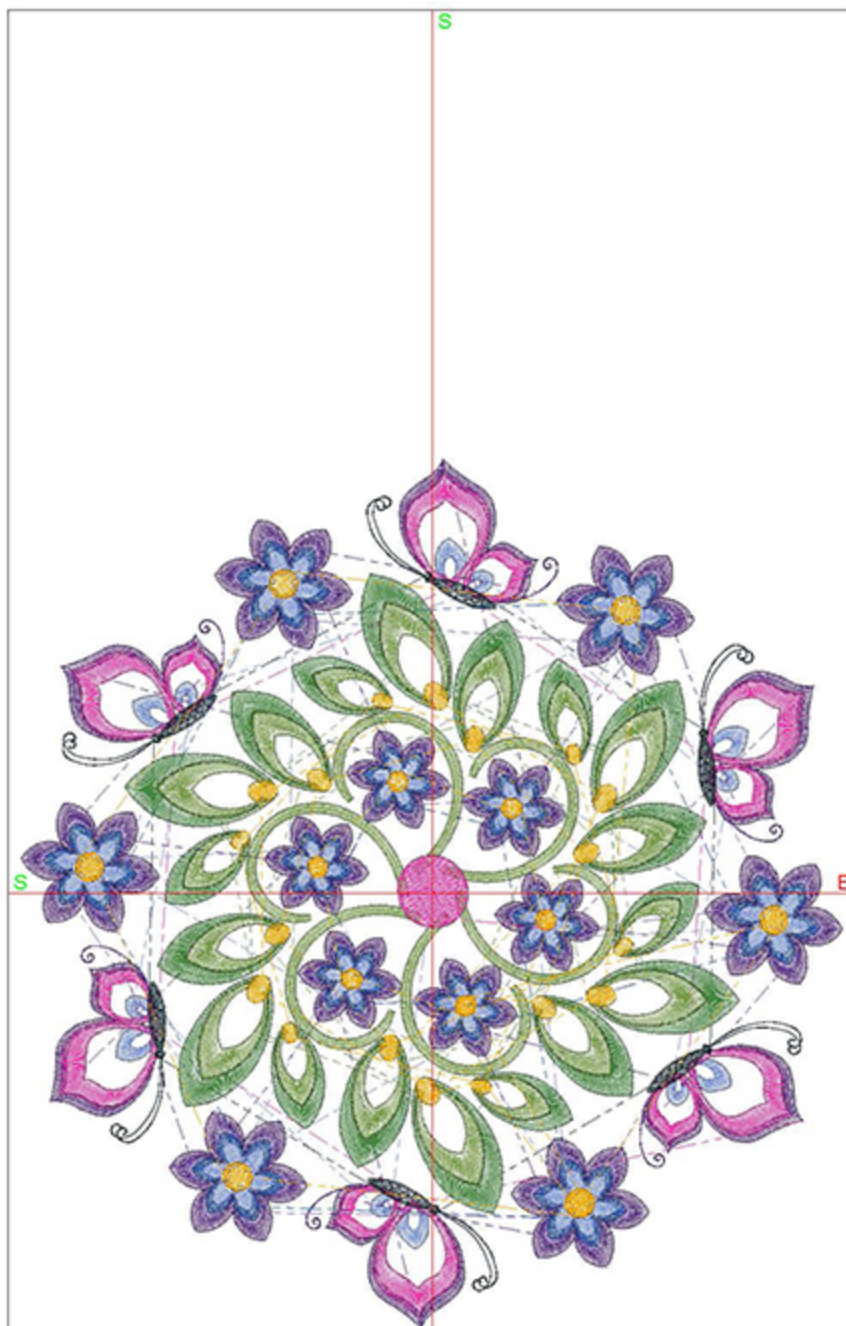
Module	Runtime (hr:min:sec)
Default	1:22:36



Design Worksheet

Zoom: 0.85

BERNINA Embroidery  
Software DesignerPlus



Name: BBISButterflyFlower6x6.ART

Height: 150.0 mm  
Width: 141.8 mm  
Stitches: 29003  
Colors: 9  
Color changes: 10  
Trims: 132  
Machine format: Bernina  
Hoop: Medium (180 x 130)  
Total bobbin: 43.44m

Color Sequence:

#	Color	Code	Name	Chart
1.	4	1830	China Blue	Madeira Polyneon
2.	2	1922	Regal Purple	Madeira Polyneon
3.	1	1709	Shocking Pink	Madeira Polyneon
4.	10	1507	Pea Coat Lining	Madeira Polyneon
5.	3	1832	Majestic Purple	Madeira Polyneon
6.	5	1829	Blue Bird	Madeira Polyneon
7.	4	1830	China Blue	Madeira Polyneon
8.	8	1770	Light Emerald Green	Madeira Polyneon
9.	7	1648	Celery	Madeira Polyneon
10.	9	1951	Pumpkin Chiffon	Madeira Polyneon
11.	1	1709	Shocking Pink	Madeira Polyneon

Machine runtime:

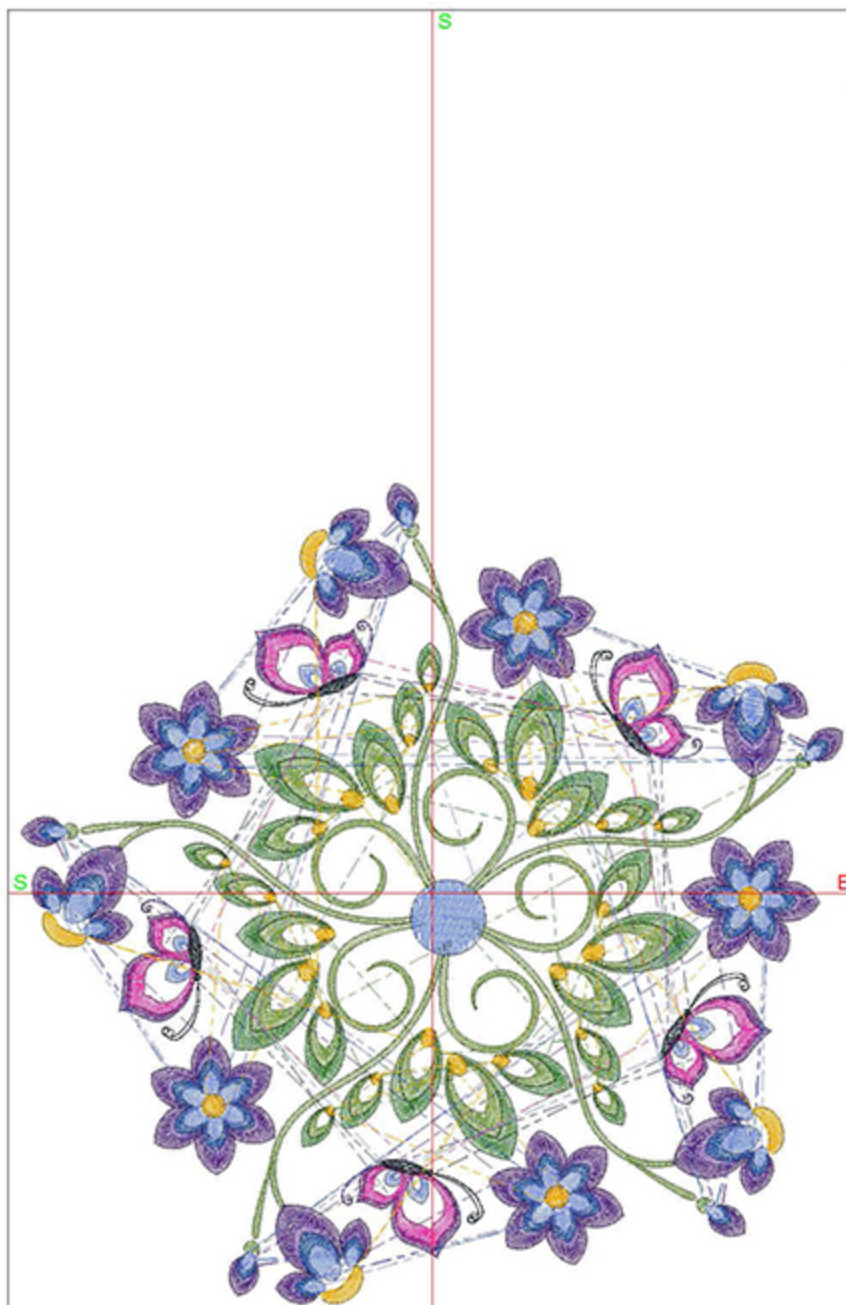
Module	Runtime (hr:min:sec)
Default	1:37:23



Design Worksheet

Zoom: 0.81

BERNINA Embroidery  
Software DesignerPlus



Name: BBISButterflyFlowerBlock6x6.AR  
T

Height: 149.8 mm  
Width: 150.0 mm  
Stitches: 25967  
Colors: 9  
Color changes: 10  
Trims: 166  
Machine format: Bernina  
Hoop: Medium (180 x 130)  
Total bobbin: 35.87m

Color Sequence:

#	Color	Code	Name	Chart
1.	8	1770	Light Emerald Green	Madeira Polyneon
2.	7	1648	Celery	Madeira Polyneon
3.	4	1830	China Blue	Madeira Polyneon
4.	2	1922	Regal Purple	Madeira Polyneon
5.	1	1709	Shocking Pink	Madeira Polyneon
6.	10	1507	Pea Coat Lining	Madeira Polyneon
7.	2	1922	Regal Purple	Madeira Polyneon
8.	3	1832	Majestic Purple	Madeira Polyneon
9.	5	1829	Blue Bird	Madeira Polyneon
10.	4	1830	China Blue	Madeira Polyneon
11.	9	1951	Pumpkin Chiffon	Madeira Polyneon

Machine runtime:

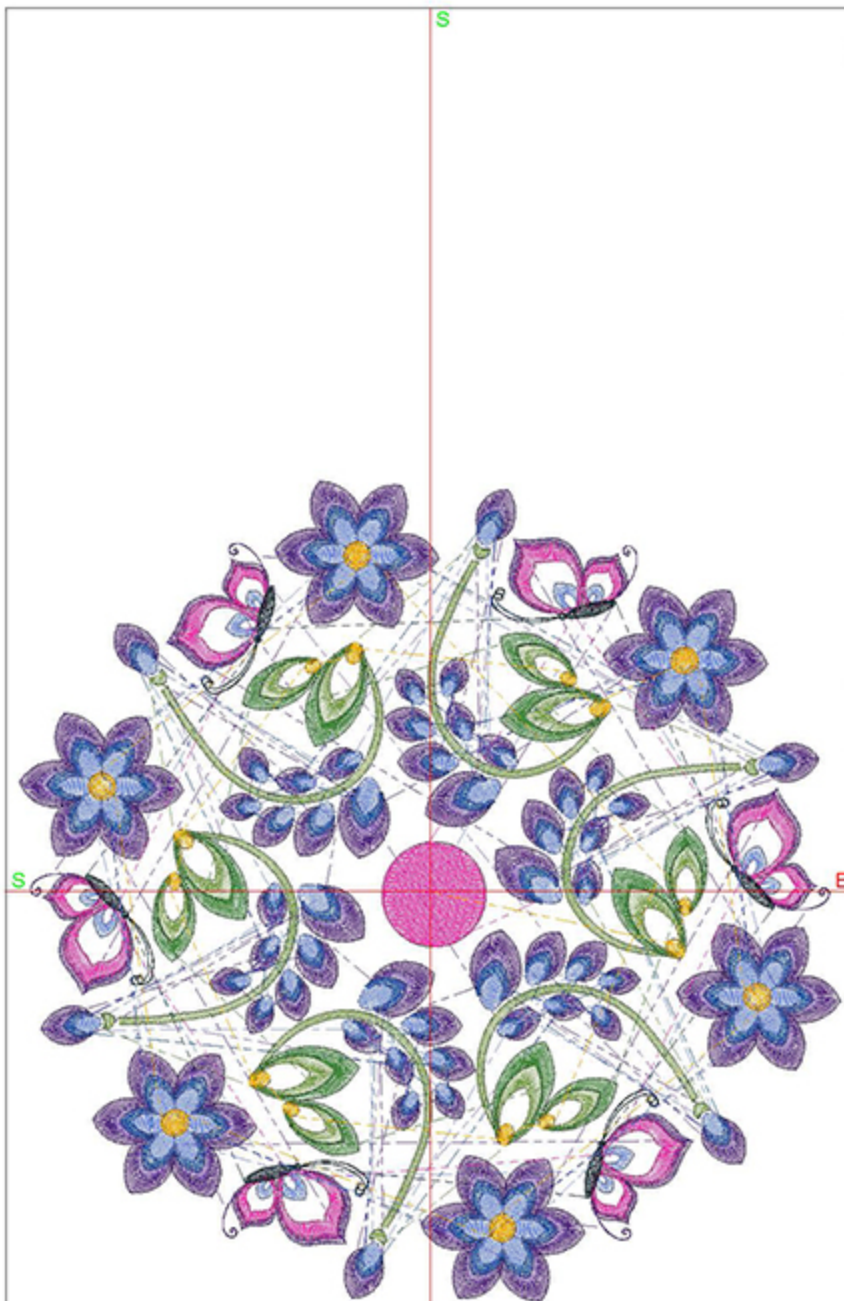
Module	Runtime (hr:min:sec)
Default	1:38:45



Design Worksheet

Zoom: 0.81

BERNINA Embroidery  
Software DesignerPlus



Name: BBISFivePetal6x6.ART

Height: 149.9 mm  
 Width: 150.0 mm  
 Stitches: 32178  
 Colors: 9  
 Color changes: 9  
 Trims: 241  
 Machine format: Bernina  
 Hoop: Medium (180 x 130)  
 Total bobbin: 46.76m

Color Sequence:

#	Color	Code	Name	Chart
1.	4	1830	China Blue	Madeira Polyneon
2.	2	1922	Regal Purple	Madeira Polyneon
3.	1	1709	Shocking Pink	Madeira Polyneon
4.	9	1507	Pea Coat Lining	Madeira Polyneon
5.	3	1832	Majestic Purple	Madeira Polyneon
6.	5	1829	Blue Bird	Madeira Polyneon
7.	4	1830	China Blue	Madeira Polyneon
8.	6	1648	Celery	Madeira Polyneon
9.	7	1770	Light Emerald Green	Madeira Polyneon
10.	8	1951	Pumpkin Chiffon	Madeira Polyneon

Machine runtime:

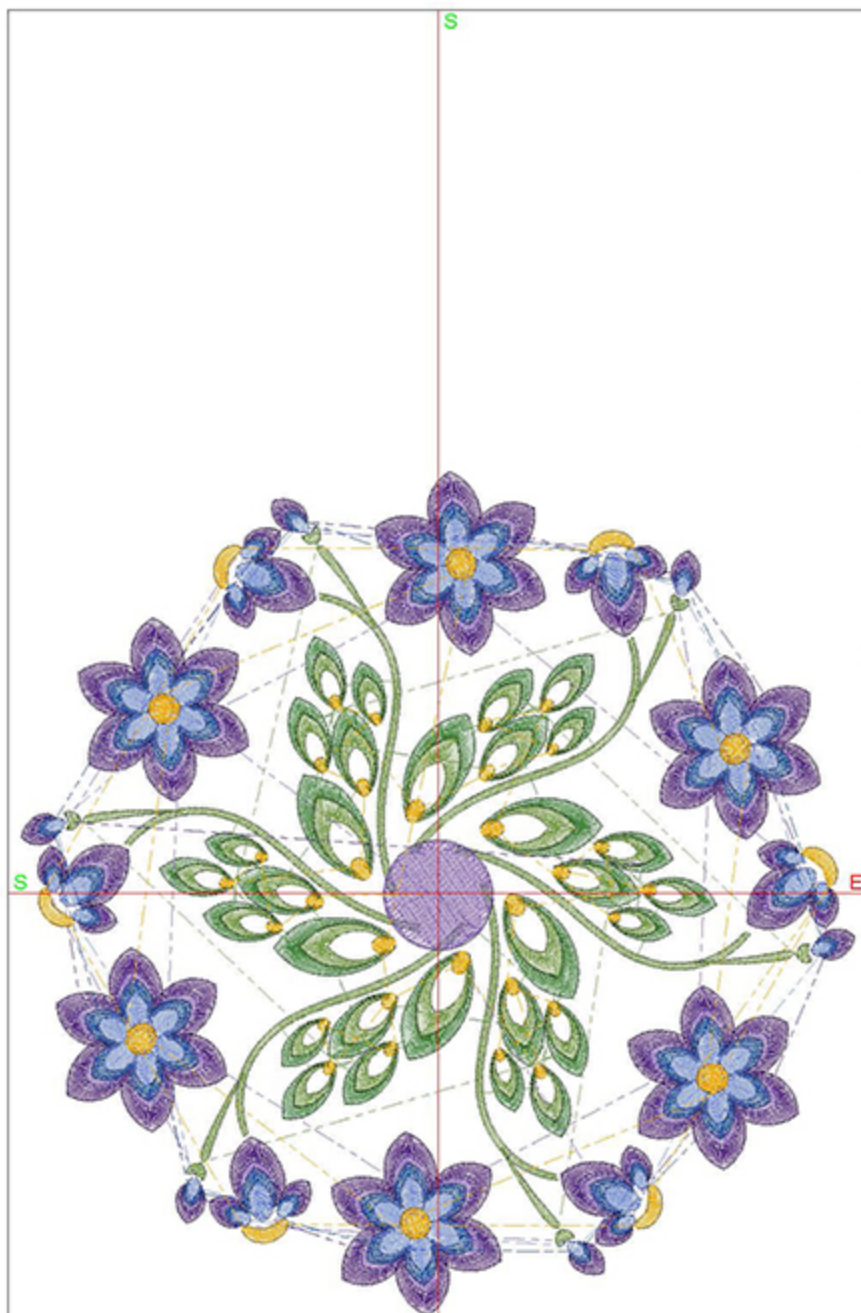
Module	Runtime (hr:min:sec)
Default	2:10:17



Design Worksheet

Zoom: 0.83

BERNINA Embroidery  
Software DesignerPlus



Name: BBISFlowerBlock6x6.ART

Height: 150.0 mm  
 Width: 148.2 mm  
 Stitches: 27544  
 Colors: 7  
 Color changes: 6  
 Trims: 169  
 Machine format: Bernina  
 Hoop: Medium (180 x 130)  
 Total bobbin: 43.16m

Color Sequence:

#	Color	Code	Name	Chart
1.	8	1770	Light Emerald Green	Madeira Polyneon
2.	7	1648	Celery	Madeira Polyneon
3.	2	1922	Regal Purple	Madeira Polyneon
4.	3	1832	Majestic Purple	Madeira Polyneon
5.	5	1829	Blue Bird	Madeira Polyneon
6.	4	1830	China Blue	Madeira Polyneon
7.	9	1951	Pumpkin Chiffon	Madeira Polyneon

Machine runtime:

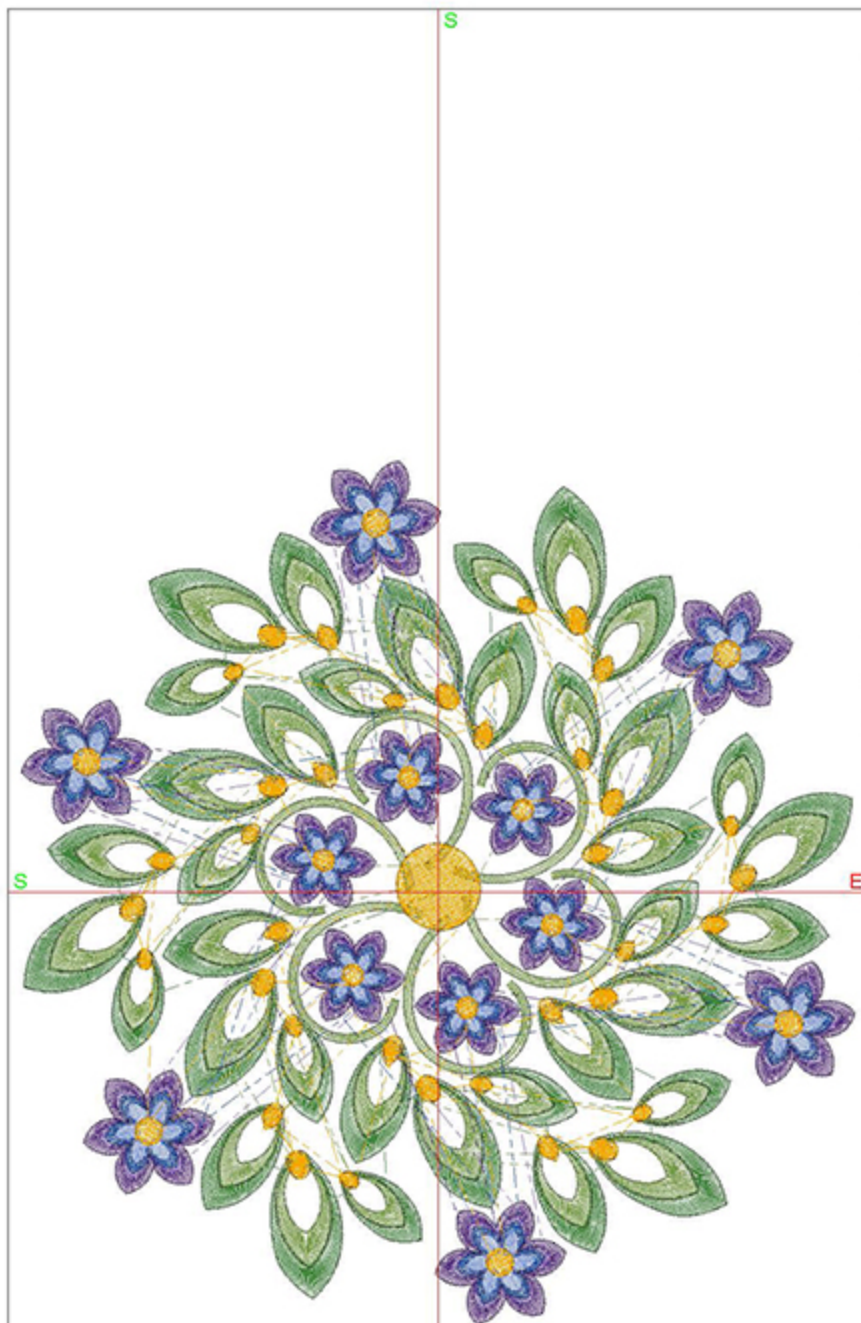
Module	Runtime (hr:min:sec)
Default	1:42:24



Design Worksheet

Zoom: 0.85

BERNINA Embroidery  
Software DesignerPlus



Name: BBISLeavesBlock6x6.ART

Height: 150.0 mm  
 Width: 144.8 mm  
 Stitches: 30225  
 Colors: 7  
 Color changes: 7  
 Trims: 175  
 Machine format: Bernina  
 Hoop: Medium (180 x 130)  
 Total bobbin: 47.12m

Color Sequence:

#	Color	Code	Name	Chart
1.	8	1770	Light Emerald Green	Madeira Polyneon
2.	7	1648	Celery	Madeira Polyneon
3.	9	1951	Pumpkin Chiffon	Madeira Polyneon
4.	2	1922	Regal Purple	Madeira Polyneon
5.	3	1832	Majestic Purple	Madeira Polyneon
6.	5	1829	Blue Bird	Madeira Polyneon
7.	4	1830	China Blue	Madeira Polyneon
8.	9	1951	Pumpkin Chiffon	Madeira Polyneon

Machine runtime:

Module	Runtime (hr:min:sec)
Default	1:49:56





## Design Worksheet

BERNINA Embroidery Software DesignerPlus

Design: BBISMultiLeavesBlock6x6

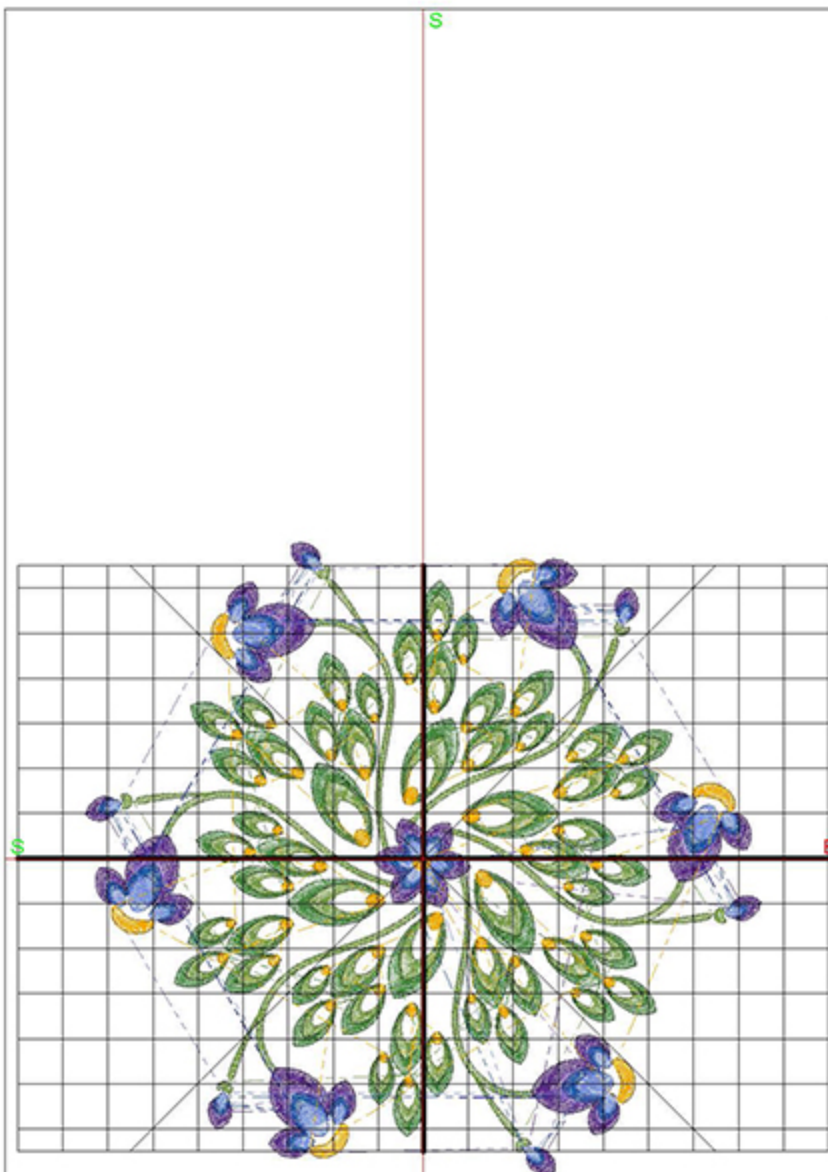
Stitches: 23755

Colors: 7

Height: 140.3 mm

Width: 150.0 mm

Zoom: 0.66



Total bobbin: 33.78m

Color Film:

#	Chart	Code	Name	Thread
1.	■	Madeira Polyneon 1770	Light Emerald Green	28.69m
2.	■	Madeira Polyneon 1648	Celery	33.23m
3.	■	Madeira Polyneon 1922	Regal Purple	13.19m
4.	■	Madeira Polyneon 1832	Majestic Purple	8.24m
5.	■	Madeira Polyneon 1829	Blue Bird	6.25m
6.	■	Madeira Polyneon 1830	China Blue	5.97m
7.	■	Madeira Polyneon 1951	Pumpkin Chiffon	8.94m

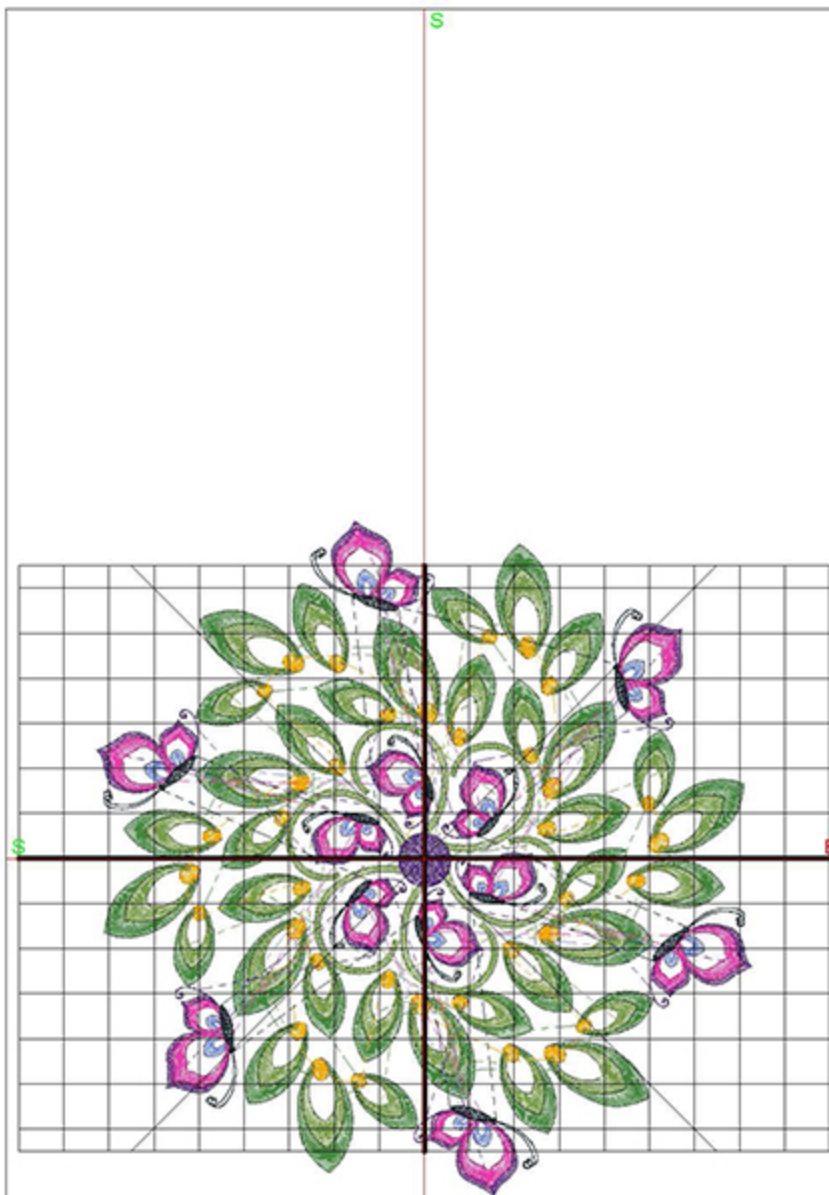
Machine runtime: 1:16:39



## Design Worksheet

BERNINA Embroidery Software DesignerPlus  
 Design: BBISPurpleCenterButterfly6x6

Stitches: 23228  
 Colors: 7  
 Height: 150.0 mm  
 Width: 145.4 mm  
 Zoom: 0.66



Total bobbin: 37.05m

Color Film:

#	Chart	Code	Name	Thread
1.		1770	Light Emerald Green	33.87m
2.		1648	Celery	33.29m
3.		1922	Regal Purple	1.41m
4.		1951	Pumpkin Chiffon	6.55m
5.		1830	China Blue	4.24m
6.		1922	Regal Purple	10.40m
7.		1709	Shocking Pink	13.22m
8.		1507	Pea Coat Lining	6.01m

Machine runtime: 1:02:50



## Design Worksheet

BERNINA Embroidery Software DesignerPlus

Design: BBISWirlBlock6x6

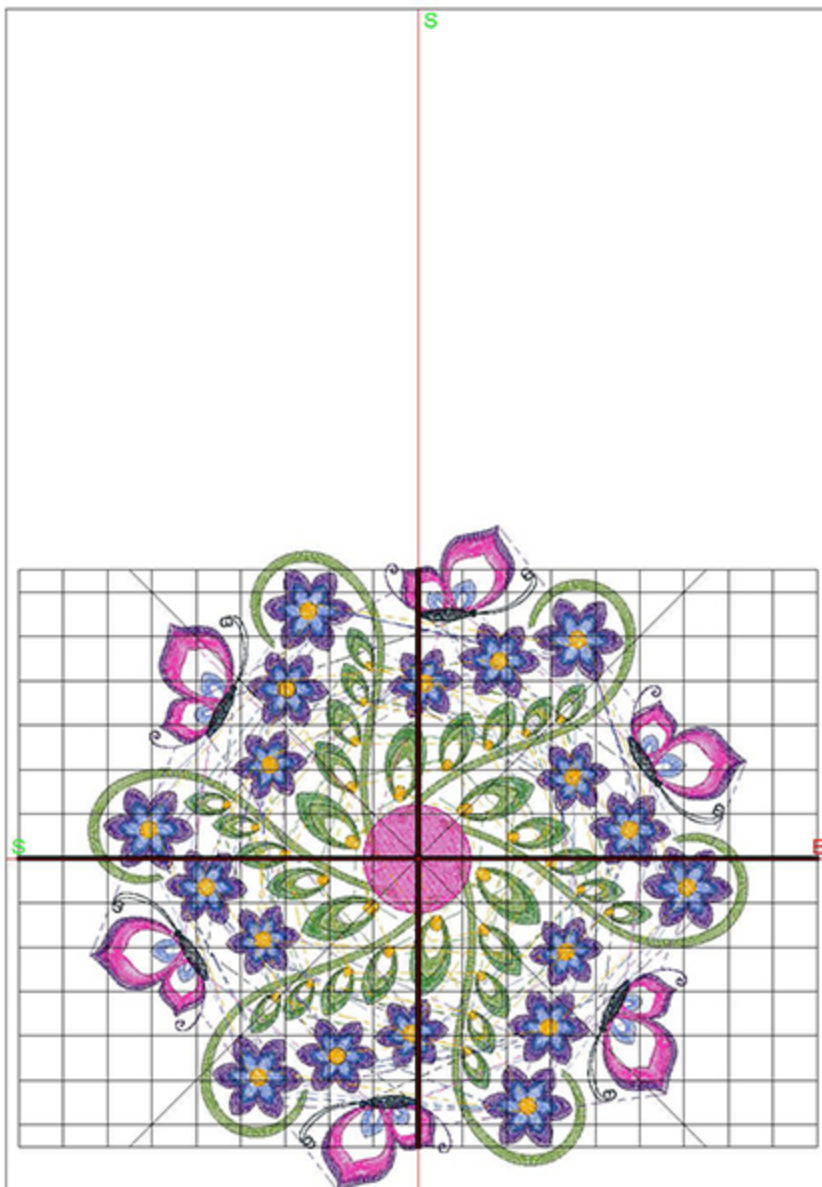
Stitches: 35058

Colors: 9

Height: 150.0 mm

Width: 148.8 mm

Zoom: 0.65



Total bobbin: 45.23m

Color Film:

#	Chart	Code	Name	Thread
1.	■	Madeira Polyneon 1770	Light Emerald Green	13.48m
2.	■	Madeira Polyneon 1648	Celery	25.18m
3.	■	Madeira Polyneon 1830	China Blue	3.24m
4.	■	Madeira Polyneon 1922	Regal Purple	7.92m
5.	■	Madeira Polyneon 1709	Shocking Pink	15.85m
6.	■	Madeira Polyneon 1507	Pea Coat Lining	4.59m
7.	■	Madeira Polyneon 1922	Regal Purple	26.38m
8.	■	Madeira Polyneon 1832	Majestic Purple	17.31m
9.	■	Madeira Polyneon 1829	Blue Bird	13.14m
10.	■	Madeira Polyneon 1830	China Blue	11.73m
11.	■	Madeira Polyneon 1951	Pumpkin Chiffon	7.62m

Machine runtime: 1:31:05



## Design Worksheet

BERNINA Embroidery Software DesignerPlus

Design: BBISWirlButterflyBlock6x6

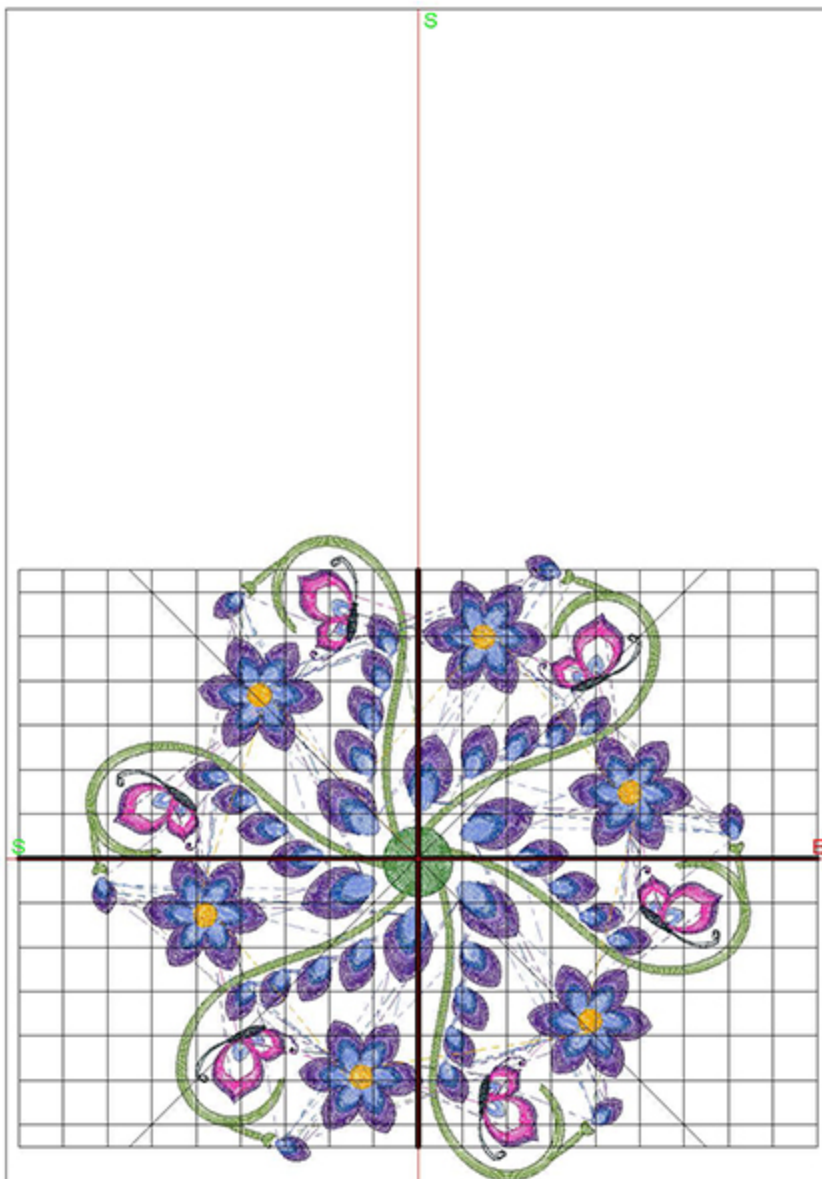
Stitches: 26655

Colors: 9

Height: 145.5 mm

Width: 150.0 mm

Zoom: 0.65



Total bobbin: 40.19m

Color Film:

#	Chart	Code	Name	Thread
1.	■ Madeira Polyneon	1648	Celery	15.96m
2.	■ Madeira Polyneon	1770	Light Emerald Green	2.34m
3.	■ Madeira Polyneon	1830	China Blue	2.05m
4.	■ Madeira Polyneon	1922	Regal Purple	5.00m
5.	■ Madeira Polyneon	1709	Shocking Pink	6.29m
6.	■ Madeira Polyneon	1507	Pea Coat Lining	2.86m
7.	■ Madeira Polyneon	1922	Regal Purple	33.44m
8.	■ Madeira Polyneon	1832	Majestic Purple	20.58m
9.	■ Madeira Polyneon	1829	Blue Bird	15.28m
10.	■ Madeira Polyneon	1830	China Blue	15.09m
11.	■ Madeira Polyneon	1951	Pumpkin Chiffon	2.23m

Machine runtime: 1:21:29