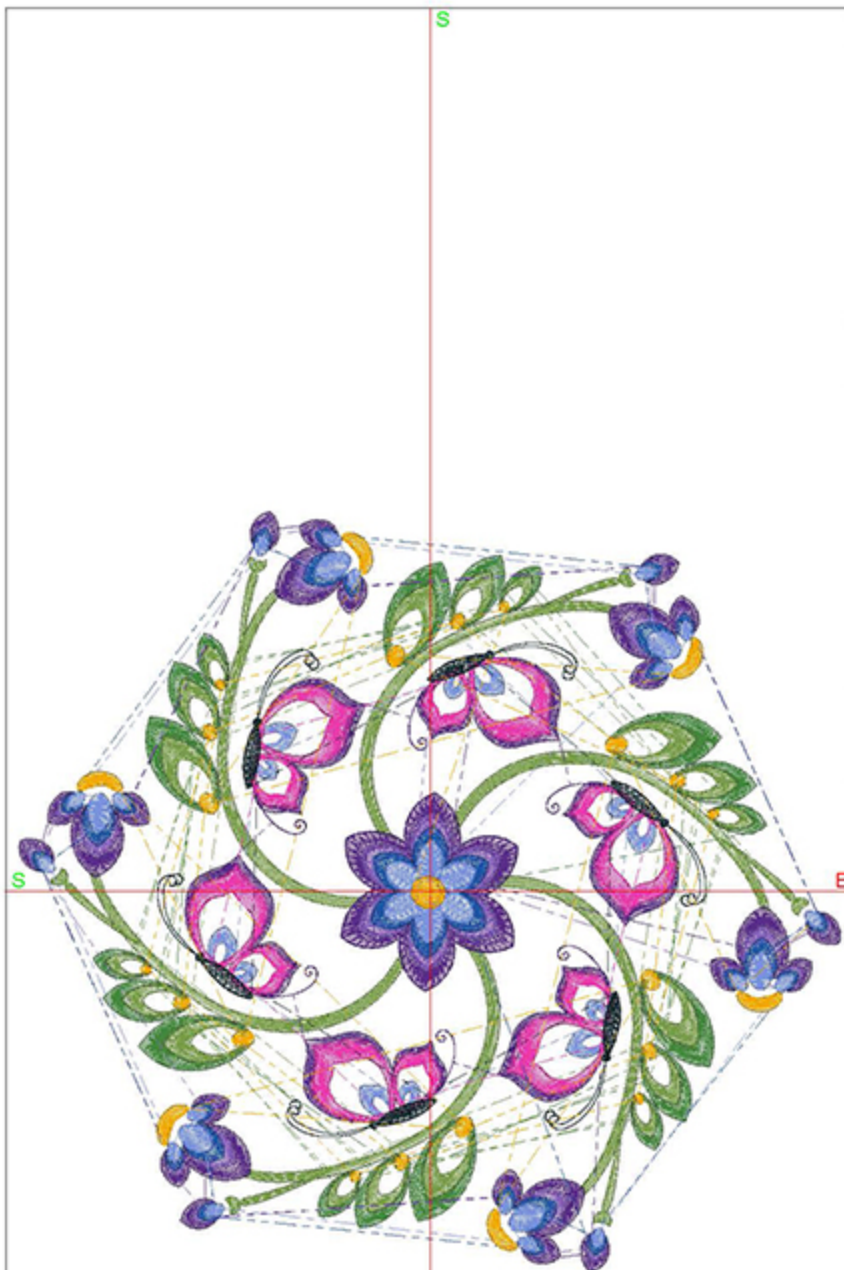




Design Worksheet

Zoom: 0.61

BERNINA Embroidery  
Software DesignerPlus



Name: BBISBigFlowerBlock8x8.ART

Height: 185.1 mm  
 Width: 199.9 mm  
 Stitches: 30582  
 Colors: 9  
 Color changes: 9  
 Trims: 149  
 Machine format: Bernina  
 Hoop: Medium (180 x 130)  
 Total bobbin: 58.24m

Color Sequence:

#	Color	Code	Name	Chart
1.	8	1770	Light Emerald Green	Madeira Polyneon
2.	7	1648	Celery	Madeira Polyneon
3.	4	1830	China Blue	Madeira Polyneon
4.	2	1922	Regal Purple	Madeira Polyneon
5.	1	1709	Shocking Pink	Madeira Polyneon
6.	10	1507	Pea Coat Lining	Madeira Polyneon
7.	3	1832	Majestic Purple	Madeira Polyneon
8.	5	1829	Blue Bird	Madeira Polyneon
9.	4	1830	China Blue	Madeira Polyneon
10.	9	1951	Pumpkin Chiffon	Madeira Polyneon

Machine runtime:

Module	Runtime (hr:min:sec)
Default	1:44:48



Design Worksheet

Zoom: 0.65

BERNINA Embroidery  
Software DesignerPlus



Name: BBISBlockFlower8x8.ART

Height: 192.2 mm  
 Width: 200.0 mm  
 Stitches: 36121  
 Colors: 8  
 Color changes: 8  
 Trims: 209  
 Machine format: Bernina  
 Hoop: Medium (180 x 130)  
 Total bobbin: 58.83m

Color Sequence:

#	Color	Code	Name	Chart
1.	6	1648	Celery	Madeira Polyneon
2.	4	1830	China Blue	Madeira Polyneon
3.	2	1922	Regal Purple	Madeira Polyneon
4.	1	1709	Shocking Pink	Madeira Polyneon
5.	9	1507	Pea Coat Lining	Madeira Polyneon
6.	3	1832	Majestic Purple	Madeira Polyneon
7.	5	1829	Blue Bird	Madeira Polyneon
8.	4	1830	China Blue	Madeira Polyneon
9.	8	1951	Pumpkin Chiffon	Madeira Polyneon

Machine runtime:

Module	Runtime (hr:min:sec)
Default	2:11:17



Design Worksheet

Zoom: 0.61

BERNINA Embroidery  
Software DesignerPlus



Name: BBISButterflyBlock8x8.ART

Height: 177.3 mm  
 Width: 200.0 mm  
 Stitches: 27880  
 Colors: 9  
 Color changes: 11  
 Trims: 145  
 Machine format: Bernina  
 Hoop: Medium (180 x 130)  
 Total bobbin: 53.89m

Color Sequence:

#	Color	Code	Name	Chart
1.	7	1648	Celery	Madeira Polyneon
2.	4	1830	China Blue	Madeira Polyneon
3.	2	1922	Regal Purple	Madeira Polyneon
4.	1	1709	Shocking Pink	Madeira Polyneon
5.	10	1507	Pea Coat Lining	Madeira Polyneon
6.	2	1922	Regal Purple	Madeira Polyneon
7.	3	1832	Majestic Purple	Madeira Polyneon
8.	5	1829	Blue Bird	Madeira Polyneon
9.	4	1830	China Blue	Madeira Polyneon
10.	8	1770	Light Emerald Green	Madeira Polyneon
11.	7	1648	Celery	Madeira Polyneon
12.	9	1951	Pumpkin Chiffon	Madeira Polyneon

Machine runtime:

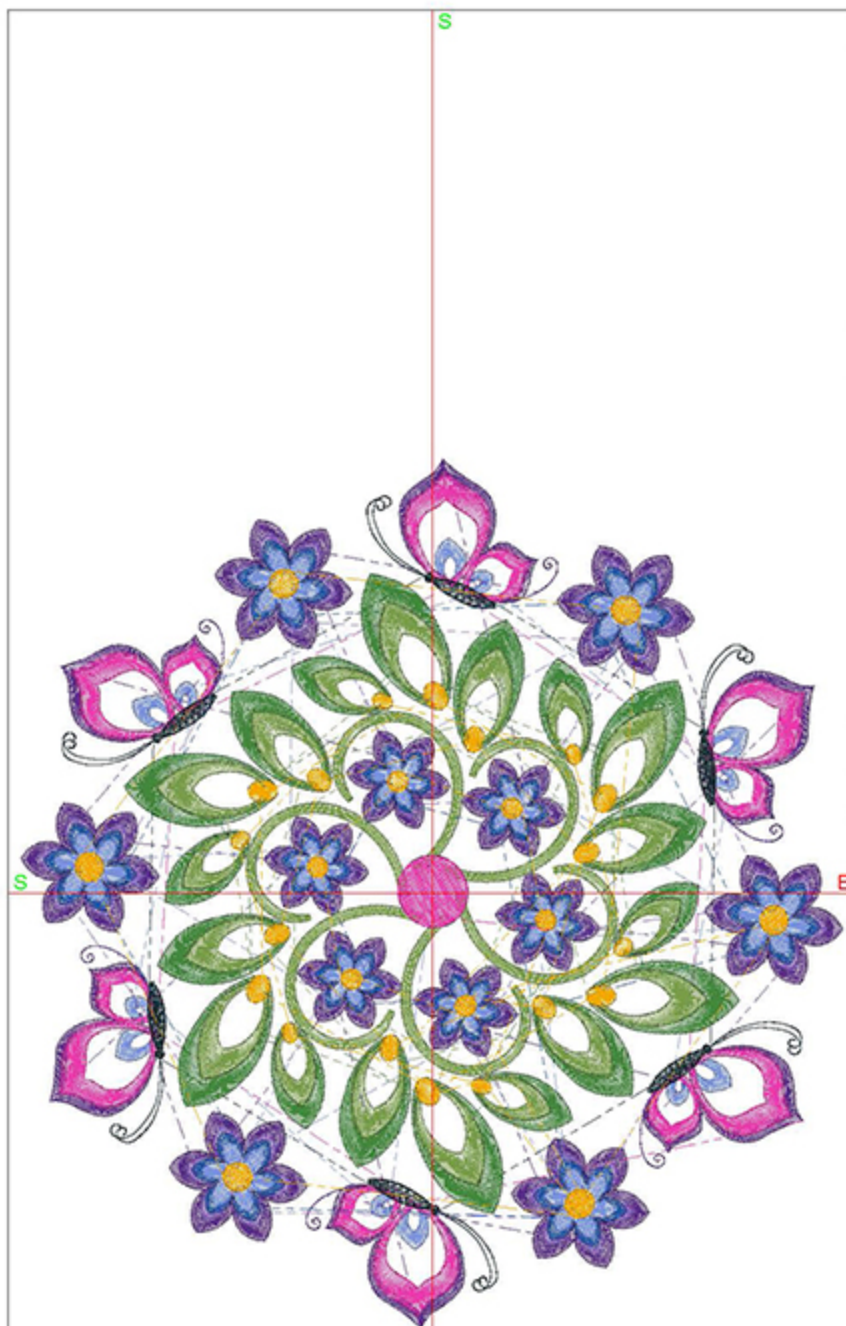
Module	Runtime (hr:min:sec)
Default	1:38:08



Design Worksheet

Zoom: 0.64

BERNINA Embroidery  
Software DesignerPlus



Name: BBISButterflyFlower8x8.ART

Height: 200.0 mm  
Width: 189.0 mm  
Stitches: 39031  
Colors: 9  
Color changes: 10  
Trims: 132  
Machine format: Bernina  
Hoop: Medium (180 x 130)  
Total bobbin: 73.96m

Color Sequence:

#	Color	Code	Name	Chart
1.	4	1830	China Blue	Madeira Polyneon
2.	2	1922	Regal Purple	Madeira Polyneon
3.	1	1709	Shocking Pink	Madeira Polyneon
4.	10	1507	Pea Coat Lining	Madeira Polyneon
5.	3	1832	Majestic Purple	Madeira Polyneon
6.	5	1829	Blue Bird	Madeira Polyneon
7.	4	1830	China Blue	Madeira Polyneon
8.	8	1770	Light Emerald Green	Madeira Polyneon
9.	7	1648	Celery	Madeira Polyneon
10.	9	1951	Pumpkin Chiffon	Madeira Polyneon
11.	1	1709	Shocking Pink	Madeira Polyneon

Machine runtime:

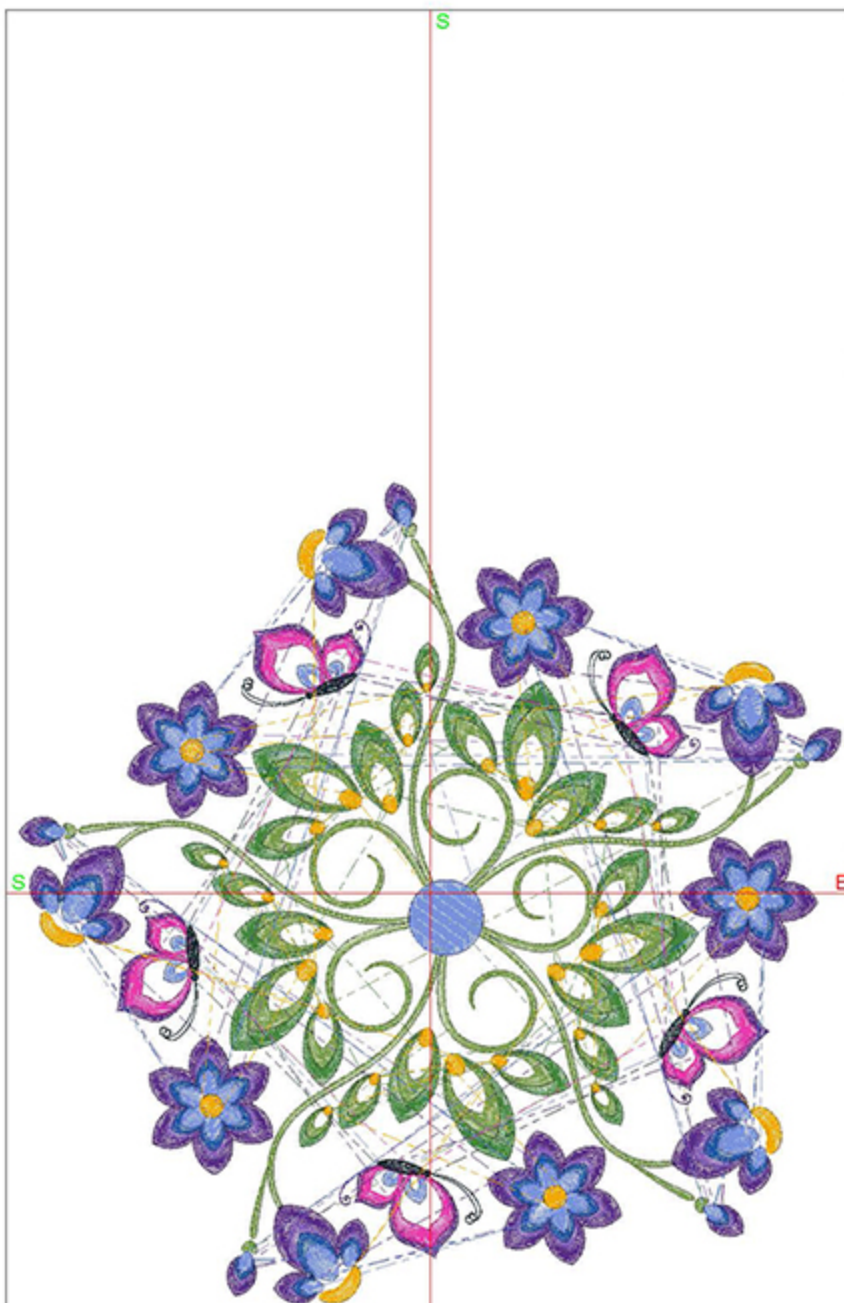
Module	Runtime (hr:min:sec)
Default	1:59:40



Design Worksheet

Zoom: 0.61

BERNINA Embroidery  
Software DesignerPlus



Name: BBISButterflyFlowerBlock8x8.AR  
T

Height: 199.7 mm  
Width: 200.0 mm  
Stitches: 34922  
Colors: 9  
Color changes: 10  
Trims: 171  
Machine format: Bernina  
Hoop: Medium (180 x 130)  
Total bobbin: 61.18m

Color Sequence:

#	Color	Code	Name	Chart
1.	8	1770	Light Emerald Green	Madeira Polyneon
2.	7	1648	Celery	Madeira Polyneon
3.	4	1830	China Blue	Madeira Polyneon
4.	2	1922	Regal Purple	Madeira Polyneon
5.	1	1709	Shocking Pink	Madeira Polyneon
6.	10	1507	Pea Coat Lining	Madeira Polyneon
7.	2	1922	Regal Purple	Madeira Polyneon
8.	3	1832	Majestic Purple	Madeira Polyneon
9.	5	1829	Blue Bird	Madeira Polyneon
10.	4	1830	China Blue	Madeira Polyneon
11.	9	1951	Pumpkin Chiffon	Madeira Polyneon

Machine runtime:

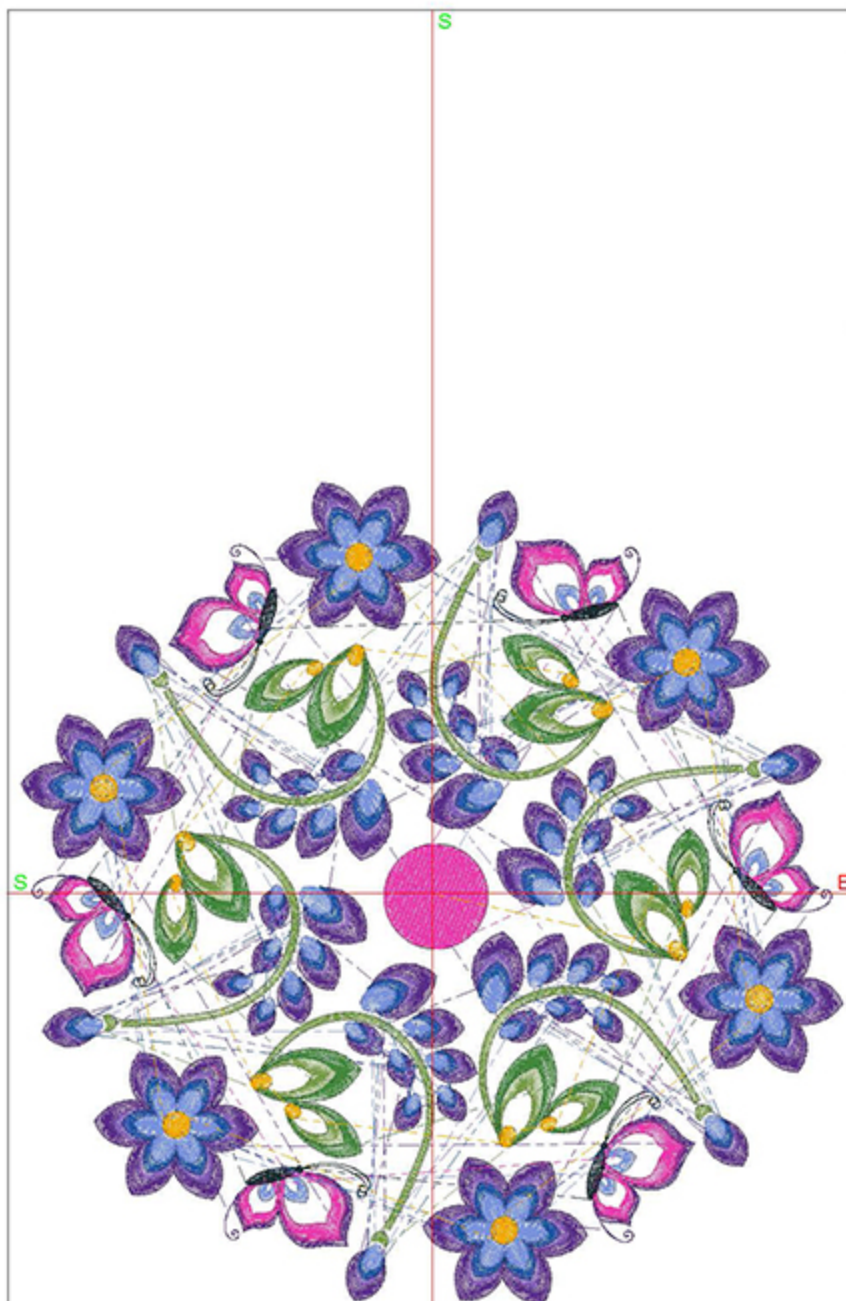
Module	Runtime (hr:min:sec)
Default	1:59:50



Design Worksheet

Zoom: 0.61

BERNINA Embroidery  
Software DesignerPlus



Name: BBISFivePetal8x8.ART

Height: 199.9 mm  
 Width: 200.0 mm  
 Stitches: 43399  
 Colors: 9  
 Color changes: 9  
 Trims: 259  
 Machine format: Bernina  
 Hoop: Medium (180 x 130)  
 Total bobbin: 80.22m

Color Sequence:

#	Color	Code	Name	Chart
1.	4	1830	China Blue	Madeira Polyneon
2.	2	1922	Regal Purple	Madeira Polyneon
3.	1	1709	Shocking Pink	Madeira Polyneon
4.	9	1507	Pea Coat Lining	Madeira Polyneon
5.	3	1832	Majestic Purple	Madeira Polyneon
6.	5	1829	Blue Bird	Madeira Polyneon
7.	4	1830	China Blue	Madeira Polyneon
8.	6	1648	Celery	Madeira Polyneon
9.	7	1770	Light Emerald Green	Madeira Polyneon
10.	8	1951	Pumpkin Chiffon	Madeira Polyneon

Machine runtime:

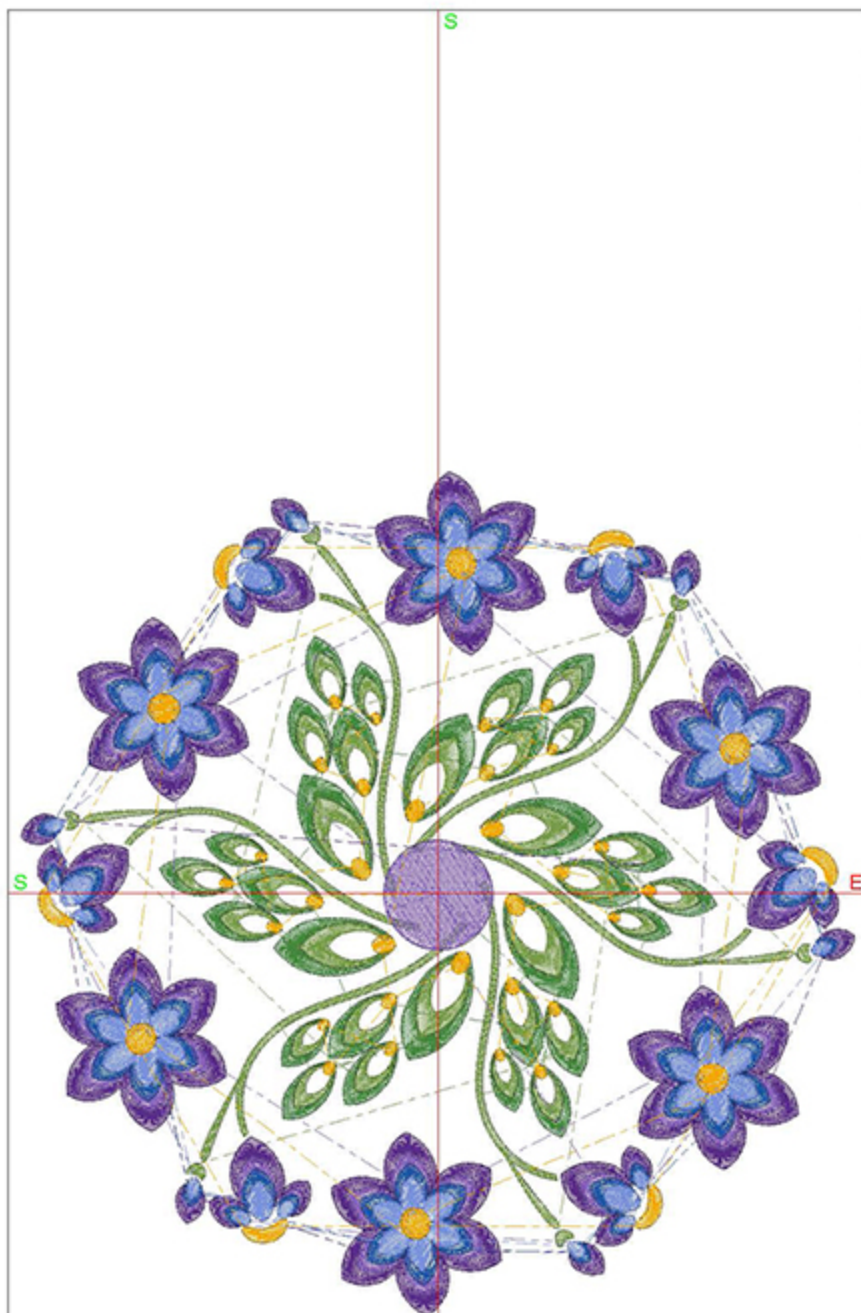
Module	Runtime (hr:min:sec)
Default	2:39:30



Design Worksheet

Zoom: 0.62

BERNINA Embroidery  
Software DesignerPlus



Name: BBISFlowerBlock8x8.ART

Height: 200.0 mm  
 Width: 197.6 mm  
 Stitches: 37125  
 Colors: 7  
 Color changes: 6  
 Trims: 169  
 Machine format: Bernina  
 Hoop: Medium (180 x 130)  
 Total bobbin: 74.74m

Color Sequence:

#	Color	Code	Name	Chart
1.	8	1770	Light Emerald Green	Madeira Polyneon
2.	7	1648	Celery	Madeira Polyneon
3.	2	1922	Regal Purple	Madeira Polyneon
4.	3	1832	Majestic Purple	Madeira Polyneon
5.	5	1829	Blue Bird	Madeira Polyneon
6.	4	1830	China Blue	Madeira Polyneon
7.	9	1951	Pumpkin Chiffon	Madeira Polyneon

Machine runtime:

Module	Runtime (hr:min:sec)
Default	2:03:42



Design Worksheet

Zoom: 0.64

BERNINA Embroidery  
Software DesignerPlus



Name: BBISLeavesBlock8x8.ART

Height: 200.0 mm  
 Width: 193.1 mm  
 Stitches: 40855  
 Colors: 7  
 Color changes: 7  
 Trims: 181  
 Machine format: Bernina  
 Hoop: Medium (180 x 130)  
 Total bobbin: 81.36m

Color Sequence:

#	Color	Code	Name	Chart
1.	8	1770	Light Emerald Green	Madeira Polyneon
2.	7	1648	Celery	Madeira Polyneon
3.	9	1951	Pumpkin Chiffon	Madeira Polyneon
4.	2	1922	Regal Purple	Madeira Polyneon
5.	3	1832	Majestic Purple	Madeira Polyneon
6.	5	1829	Blue Bird	Madeira Polyneon
7.	4	1830	China Blue	Madeira Polyneon
8.	9	1951	Pumpkin Chiffon	Madeira Polyneon

Machine runtime:

Module	Runtime (hr:min:sec)
Default	2:14:59





## Design Worksheet

BERNINA Embroidery Software DesignerPlus

Design: BBISMultiLeavesBlock8x8

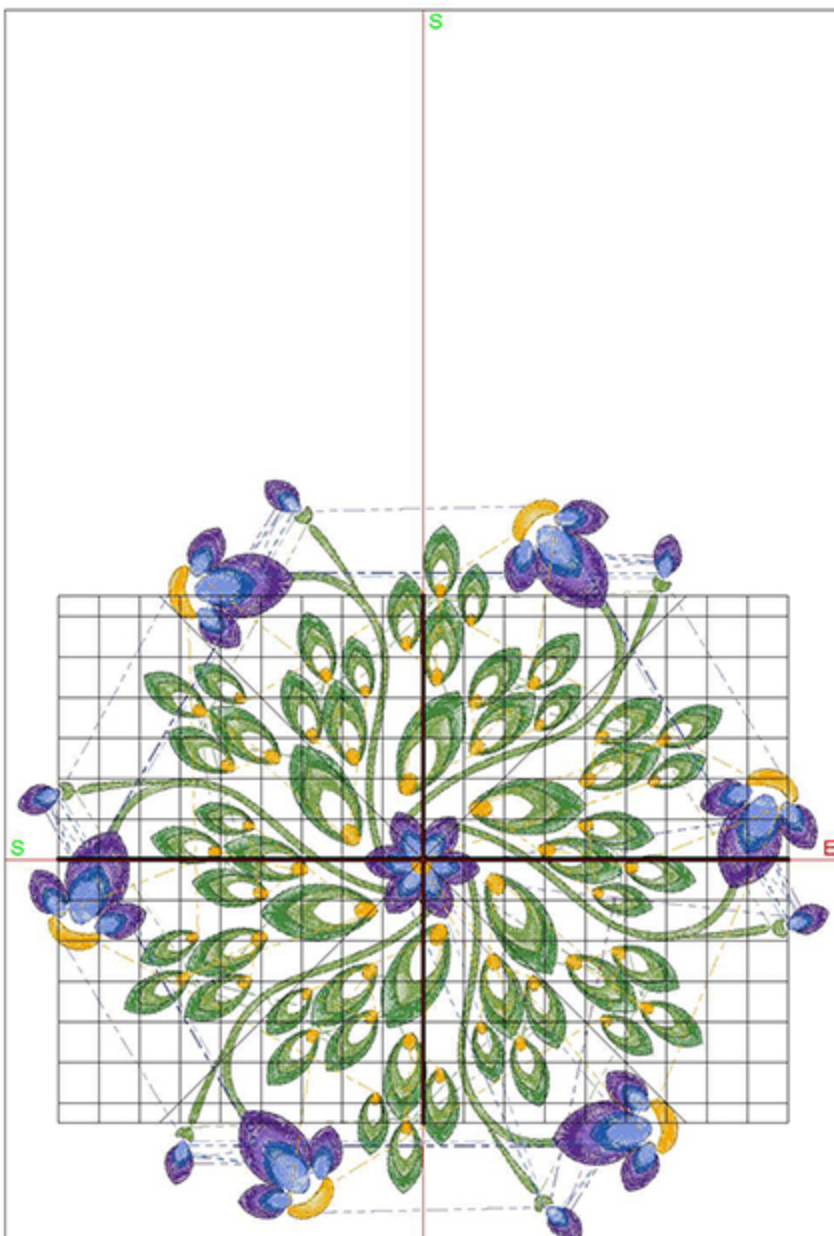
Stitches: 31628

Colors: 7

Height: 187.1 mm

Width: 200.0 mm

Zoom: 0.60



Total bobbin: 56.93m

Color Film:

#	Chart	Code	Name	Thread
1.	■	1770	Light Emerald Green	44.64m
2.	■	1648	Celery	50.01m
3.	■	1922	Regal Purple	21.08m
4.	■	1832	Majestic Purple	12.72m
5.	■	1829	Blue Bird	9.27m
6.	■	1830	China Blue	9.43m
7.	■	1951	Pumpkin Chiffon	12.18m

Machine runtime: 1:27:56



## Design Worksheet

BERNINA Embroidery Software DesignerPlus

Design: BBISPurpleCenterButterfly8x8

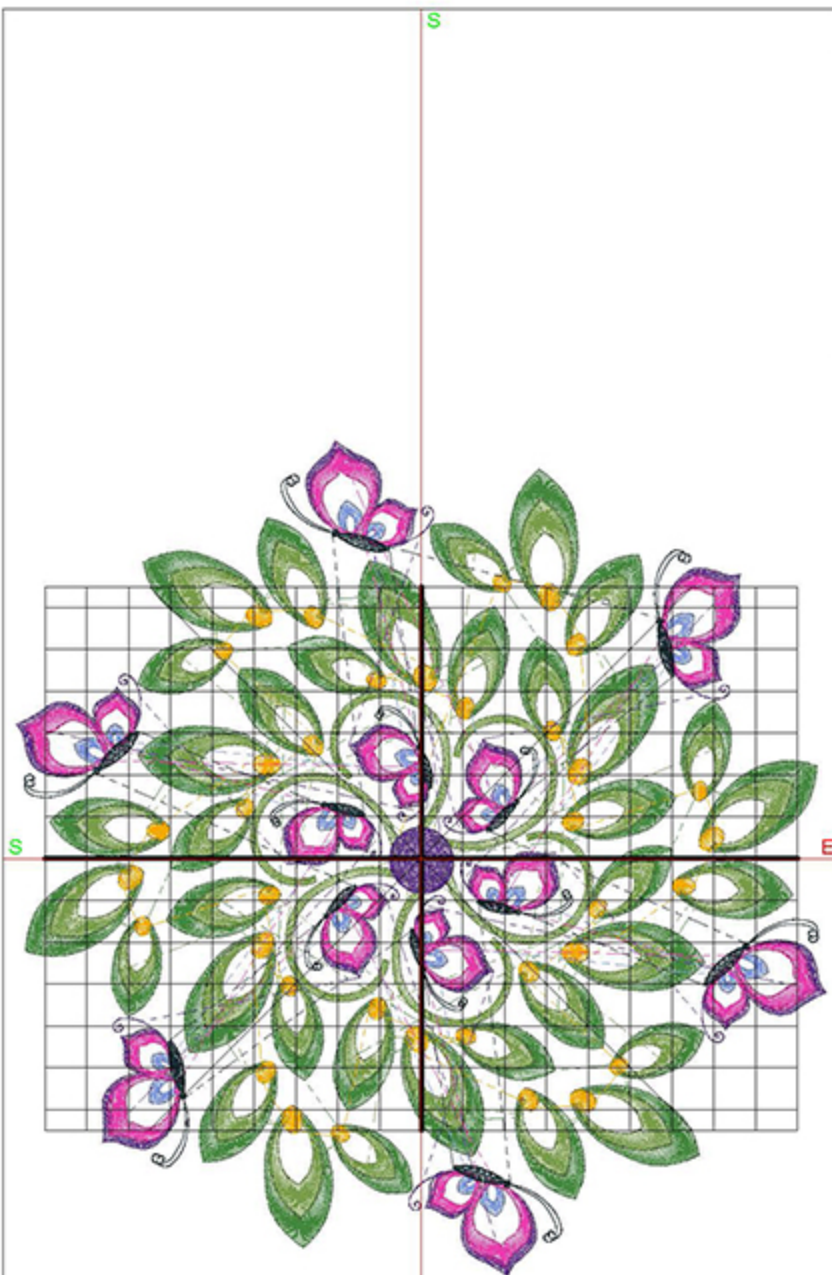
Stitches: 31391

Colors: 7

Height: 200.0 mm

Width: 193.9 mm

Zoom: 0.62



Total bobbin: 63.55m

Color Film:

#	Chart	Code	Name	Thread
1.	■	1770	Light Emerald Green	55.46m
2.	■	1648	Celery	52.96m
3.	■	1922	Regal Purple	2.30m
4.	■	1951	Pumpkin Chiffon	9.37m
5.	■	1830	China Blue	6.16m
6.	■	1922	Regal Purple	15.05m
7.	■	1709	Shocking Pink	20.23m
8.	■	1507	Pea Coat Lining	8.51m

Machine runtime: 1:16:36



## Design Worksheet

BERNINA Embroidery Software DesignerPlus

Design: BBISwirlBlock8X8

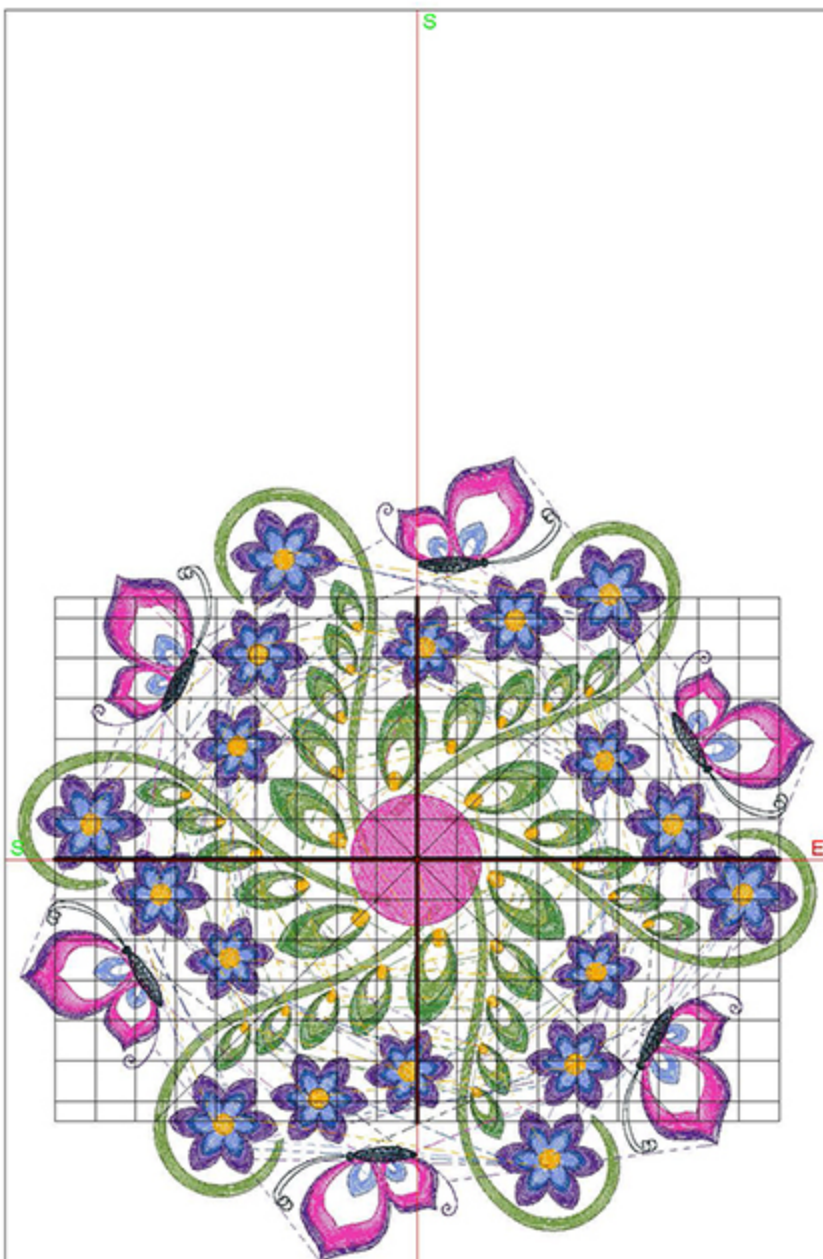
Stitches: 46807

Colors: 9

Height: 200.0 mm

Width: 198.4 mm

Zoom: 0.59



Total bobbin: 75.59m

Color Film:

#	Chart	Code	Name	Thread
1.		1770	Light Emerald Green	20.68m
2.		1648	Celery	38.92m
3.		1830	China Blue	4.86m
4.		1922	Regal Purple	11.87m
5.		1709	Shocking Pink	25.91m
6.		1507	Pea Coat Lining	6.57m
7.		1922	Regal Purple	40.43m
8.		1832	Majestic Purple	24.79m
9.		1829	Blue Bird	18.65m
10.		1830	China Blue	17.96m
11.		1951	Pumpkin Chiffon	10.55m

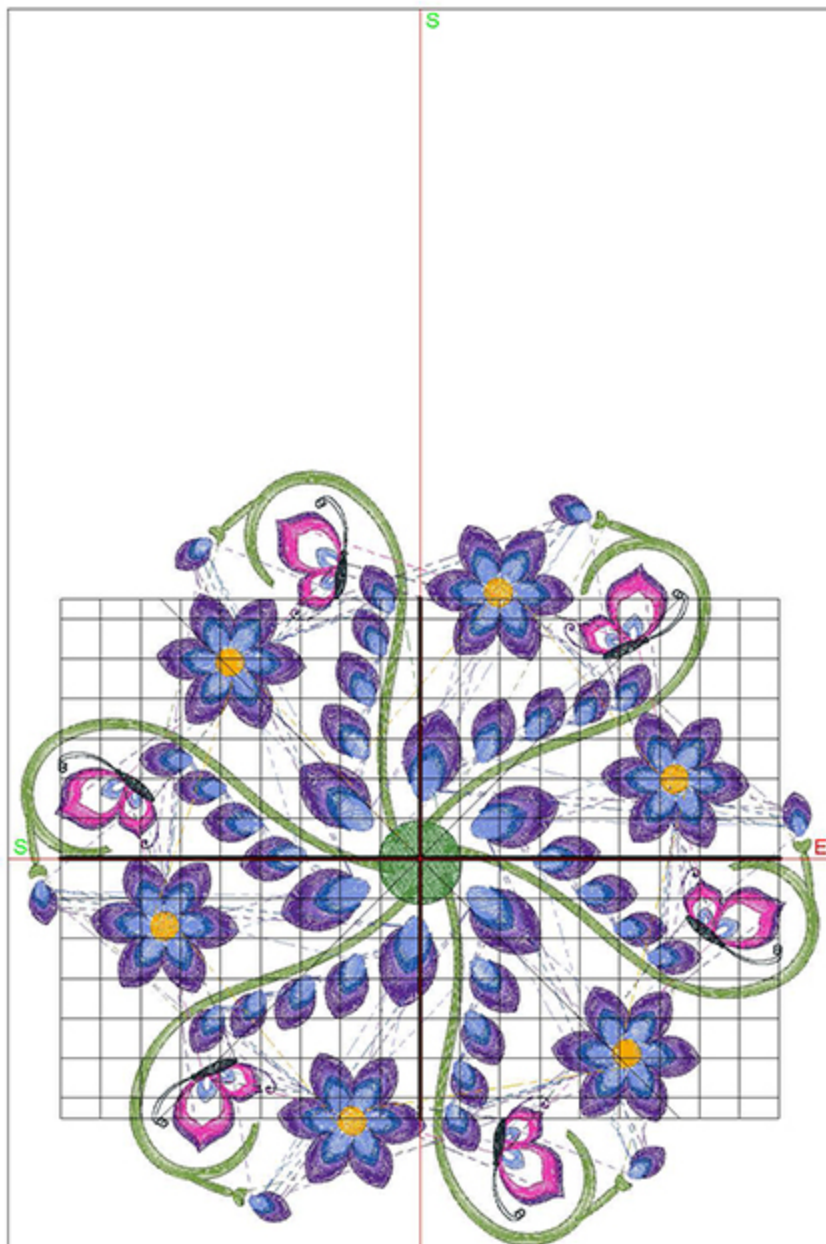
Machine runtime: 1:47:19



## Design Worksheet

BERNINA Embroidery Software DesignerPlus  
 Design: BBISWirlButterflyBlock&x8

Stitches: 35864  
 Colors: 9  
 Height: 194.1 mm  
 Width: 200.0 mm  
 Zoom: 0.59



Total bobbin: 67.83m

Color Film:

#	Chart	Code	Name	Thread
1.	■	1648	Celery	25.02m
2.	■	1770	Light Emerald Green	3.90m
3.	■	1830	China Blue	2.94m
4.	■	1922	Regal Purple	7.16m
5.	■	1709	Shocking Pink	9.58m
6.	■	1507	Pea Coat Lining	4.13m
7.	■	1922	Regal Purple	52.79m
8.	■	1832	Majestic Purple	31.15m
9.	■	1829	Blue Bird	22.80m
10.	■	1830	China Blue	23.39m
11.	■	1951	Pumpkin Chiffon	3.32m

Machine runtime: 1:35:00